

Guided Computer Tutorials

**Learning
Adobe
DreamWeaver 21.3**

Module 2

By Greg Bowden

PUBLISHED BY

GUIDED COMPUTER TUTORIALS
Highton, Victoria, 3216, Australia

www.gct.com.au

© Greg Bowden

This product is available in Single or Multi User versions.

Single-user versions are for single student or teacher use at any particular time, just as a single copy of a text book would be used. If you intend to use the tutorials with multiple students, the single user version should be upgraded to the multi-user version.

Multi-user versions allow the school or institution to print as many copies as required, or to place the PDF files on the school network, intranet and staff laptops. A certificate of authentication is provided with multi-user versions. Bookmarks provide links to all headings and sub-headings, and individual chapter files are provided.

First published 2024

ISBN: 978-1-922018-47-2 Module 2

PDF document on DVD or Download

Adobe® DreamWeaver® 21.3 is a product of Adobe Systems Incorporated.

THIS PRODUCT IS NOT ENDORSED OR SPONSORED BY
ADOBE SYSTEMS INCORPORATED, PUBLISHER OF ADOBE
DREAMWEAVER 21.3

Every effort has been made to ensure that images used in this publication are free of copyright, but there may be instances where this has not been possible. Guided Computer Tutorials would welcome any information that would redress this situation.

Learning Adobe DreamWeaver 21.3

Module 2 Contents

Chapter 12: Sample CSS Page Layouts

Opening the Sample Page	12-1
Selecting the Page Layout.....	12-1
Looking at the Page Layout.....	12-2
Looking at the CSS File	12-2
Looking at the Page Code	12-3
Adaptive and Responsive Web Sites.....	12-5
DreamWeaver Assignment 12.....	12-7

Chapter 13: Laying out a CSS Based Page

Starting a New Site.....	13-1
Saving the Pages.....	13-3
Setting the DIV Tags	13-4
Looking at the Code	13-4
Inserting the Banner DIV Tag.....	13-5
The Navigation DIV Tag	13-6
The Columns DIV Tag	13-8
Inserting the Nav2 Nested DIV Tag	13-9
Inserting the Content Nested DIV Tag	13-10
Setting the Nav2 and Content Styles	13-12
The Nav2 Style	13-12
The Content Style	13-14
Backing Up Your Site	13-17
DreamWeaver Assignment 13	13-18

Chapter 14: Adding Content to CSS Pages

Inserting the Company Logo	14-1
Opening the Page	14-1
Inserting the Image	14-1
Inserting the Navigation Content.....	14-4
Inserting the Home Button	14-4
Inserting the Packages Button	14-5
Inserting the Other Buttons.....	14-6
Inserting the Nav2 Content	14-7
Entering the Text.....	14-7
Adding Some Dummy Links.....	14-8
Inserting the Content Text	14-9
Copying the Text.....	14-9
Pasting the Text	14-9
DreamWeaver Assignment 14	14-12

Chapter 15: Formatting CSS Pages

Setting Tag Styles	15-1
The Body Tag	15-1
Changing Some Text	15-4
Creating the H1 Style	15-5
Defining Class CSS Styles	15-6
Defining ID CSS Styles	15-8
The Banner DIV Tag	15-8
The Navigation DIV Tag	15-10
The Columns DIV Tag	15-12
Formatting Link Text	15-13
Editing Styles	15-17
The Nav2 Region	15-17
The Link Text	15-19
The Content Style	15-19
Changing a Tag Style Property	15-20
Live Editing	15-22
Saving the Page as a Template	15-23
Adjusting the Current Page	15-23
Setting the Editable Region	15-24
Using the Template	15-25
Editing the Template	15-27
Understanding the CSS files	15-28
The CSS Designer Panel Width	15-30
DreamWeaver Assignment 15	15-31

Chapter 16: Centring Static Web Pages

Creating a Container Region	16-1
Opening the Page	16-1
Inserting the DIV Tag	16-1
Moving the Closing DIV Tag	16-3
Centring the Web Page	16-6
Adding a Coloured Background	16-8
Setting the Container Region to White	16-8
Setting the Body Colour	16-9
DreamWeaver Assignment 16	16-10

Chapter 17: Responsive Web Page Layouts

Creating the Files.....	17-1
The Mobile Screen Settings.....	17-2
Setting the Screen Width.....	17-2
Looking at the CSS Code.....	17-3
The Tablet Screen Settings.....	17-5
Setting the Screen Width.....	17-5
Looking at the CSS Code.....	17-6
The Desktop Screen Settings.....	17-7
Setting the Screen Width.....	17-7
Looking at the CSS Code.....	17-8
Creating the Page Layout.....	17-9
The Banner Style For the Mobile Screen.....	17-9
The Navigation Style For the Mobile Screen.....	17-10
The Content Style For Mobile Screen.....	17-11
Looking at the CSS File.....	17-13
Adding Styles to the Other Media Queries.....	17-14
The Tablet Styles.....	17-14
The Desktop Styles.....	17-16
Setting Global Styles.....	17-17
DreamWeaver Assignment 17.....	17-19

Chapter 18: Adding Content to Responsive Layouts

The Banner Content.....	18-1
Entering the Text.....	18-1
Formatting the Mobile Banner Style	18-2
Formatting the Tablet Banner Style	18-4
Formatting the Desktop Banner Style	18-6
Creating the Navigation Bar	18-8
Setting the Links	18-8
Setting Global Link Formats	18-10
Formatting the Mobile Navigation Style.....	18-13
Formatting the Tablet Navigation Style	18-14
Formatting the Desktop Navigation Style.....	18-17
Adding Content to the Content Region	18-20
Looking at the CSS Styles	18-21
Looking at Live Views.....	18-23
Browser Web Development Views	18-24
Opening the Web Developer View	18-24
Using the Web Developer View	18-25
DreamWeaver Assignment 18.....	18-26

Chapter 19: Hiding Content in Responsive Layouts

Hiding a Secondary Navigation Bar	19-1
Creating the Navigation Bar	19-1
Formatting the NAV2 Style.....	19-3
Hiding the NAV2 DIV Container	19-4
Hiding an Image	19-5
Inserting the Image DIV Container	19-5
Inserting the Image	19-7
Formatting the Image Style.....	19-8
Extension Activities.....	19-10
DreamWeaver Assignment 19.....	19-11

Chapter 20: Using Behaviours

The Behaviours Panel	20-1
Popup Messages	20-2
Setting up a Page	20-2
Popup Dialogue Boxes	20-4
Deleting a Behaviour.....	20-6
Displaying an Enlarged Image.....	20-6
Creating a New Page	20-6
Adding the Behaviour.....	20-7
Validating Forms	20-9
Creating the Orders Page	20-9
Setting the Validation Behaviour.....	20-11
Setting Required Fields	20-11
Setting an eMail Field.....	20-13
Validating Numbers.....	20-15
Effect Behaviours	20-16
DreamWeaver Assignment 20	20-19

Chapter 21: Importing Content and Media

Starting the Page	21-1
Importing Microsoft Word Documents	21-2
Opening the Prepared Word Document.....	21-2
Copying the Microsoft Word Text	21-3
Pasting the Text into DreamWeaver.....	21-3
Moving the Image	21-5
Adding a Word Table to the Page	21-7
Copying the Table.....	21-7
Pasting the Table into DreamWeaver	21-7
Adjusting the Table	21-9
Inserting Video Content	21-10
Adding Some Text	21-11
Inserting a HTML5 Video.....	21-12
Inserting YouTube Videos	21-14
DreamWeaver Assignment 21	21-17

Chapter 22: Code Snippets

Preset Snippets.....	22-1
Opening the Snippets Panel.....	22-1
Inserting Prepared Snippets.....	22-2
Creating Your Own Snippets	22-3
Entering the Snippet Content.....	22-3
Saving the Snippet.....	22-4
Using the Snippet.....	22-6
Creating a Snippets Folder.....	22-6
Adding Images to Snippets	22-7
DreamWeaver Assignment 22	22-11

Chapter 23: The Bootstrap Framework

Starting a New Site.....	23-1
Starting a Bootstrap Framework Page	23-2
Looking at the Files.....	23-3
The Navigation Bar.....	23-4
Inserting the Navigation Bar Code.....	23-4
Altering the Navigation Bar Links	23-5
Copying Navigation Bar Links.....	23-7
Inserting a Logo	23-9
Changing the Alignment of the Links.....	23-10
Displaying Images in a Carousel	23-11
Inserting the Carousel Code.....	23-11
Inserting the First Image.....	23-12
Turning Off Automatic Looping.....	23-14
Inserting the Second Image	23-15
Inserting the Third Image.....	23-17
Altering the Carousel Background	23-19
Column and Card Snippets	23-19
Inserting the Columns Code.....	23-19
Nesting Cards Within the Columns	23-20
Adding Content to the Cards	23-22
Fine Adjustments.....	23-25
DreamWeaver Assignment 23	23-26

Chapter 24: Useful Tools

Screen Displays	24-1
Portrait Orientation.....	24-1
Custom Page Displays.....	24-2
Deleting Page Sizes.....	24-4
CSS Transitions.....	24-5
Creating a CSS Style on the Image.....	24-6
Applying a CSS Transition.....	24-7
Looking at the Code	24-10
Editing CSS Transitions	24-11
Tabbed Panels.....	24-13
Inserting the Tabbed Panel	24-13
The London Tab.....	24-13
The Paris Tab.....	24-15
Previewing the Page.....	24-16
Adjusting the Tabbed Panels.....	24-17
Starter Templates.....	24-18

DreamWeaver Project 2

Sample CSS Page Layouts

Style sheets are not only used to record the text formatting of a page, they can also be used to store the layout information as well. Laying out pages using CSS styles involves storing all the text formatting and layout information in a separate CSS STYLES SHEET file. The advantages of doing this are:

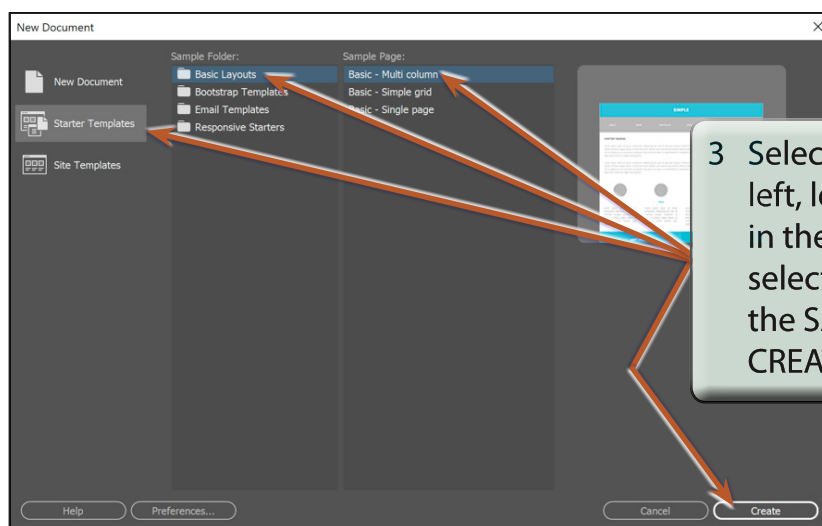
- There is less code in the web page so the page loads faster.
- The pages can adjust so that they can be viewed on different-sized screens.

Laying out pages using CSS styles is a little more involved than entering text and images straight onto a page, but it has become the standard way of creating detailed web page designs, so it is worth the initial effort. In this chapter you will look at some of the sample CSS page designs that come with DreamWeaver.

Opening the Sample Page

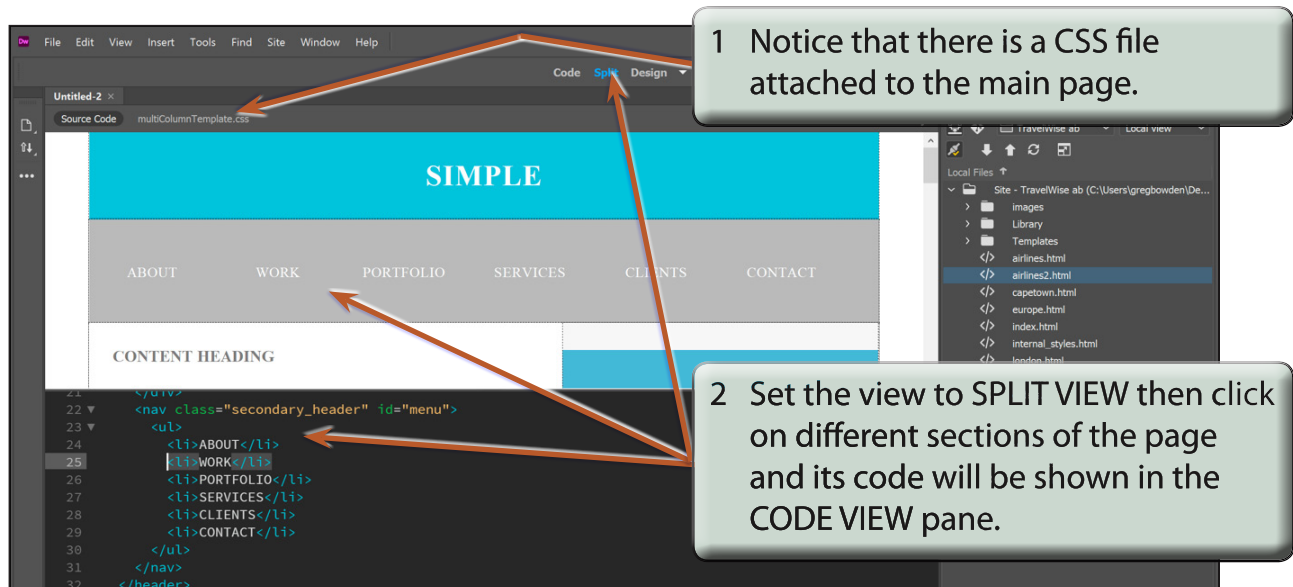
A Selecting the Page Layout

- 1 Load DreamWeaver and set the FILES panel to your TRAVELWISE site (or another site if you did not do Module 1).
- 2 Select CREATE NEW from the START screen or select NEW from the FILE menu.



- 4 The template shows a simple page layout in columns.

B Looking at the Page Layout



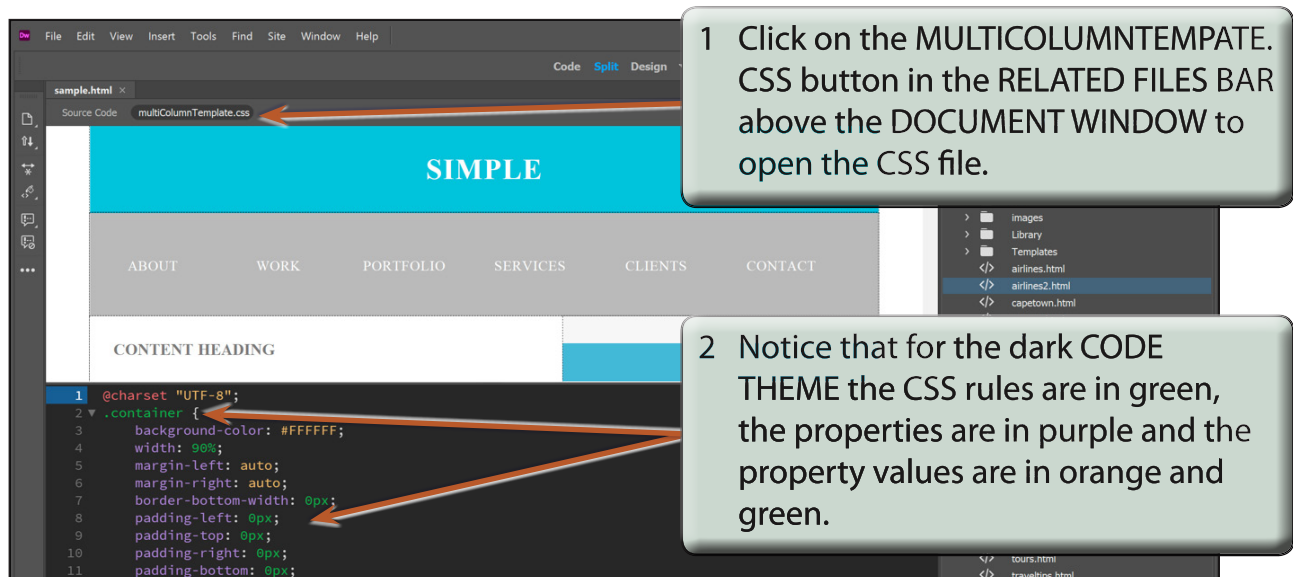
1 Notice that there is a CSS file attached to the main page.

2 Set the view to SPLIT VIEW then click on different sections of the page and its code will be shown in the CODE VIEW pane.

- 3 Press **CTRL+S** or **COMMAND+S** to save the page, SAMPLE will do for the page name.

Looking at the CSS File

To gain an understanding of why this page has a CSS page layout, the files and code can be looked at more closely.



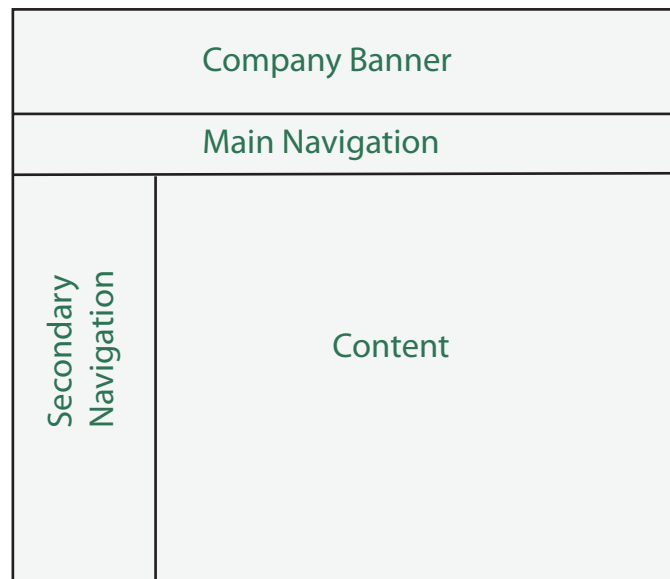
1 Click on the MULTICOLUMNTEMPLATE.CSS button in the RELATED FILES BAR above the DOCUMENT WINDOW to open the CSS file.

2 Notice that for the dark CODE THEME the CSS rules are in green, the properties are in purple and the property values are in orange and green.

Laying out a CSS Based Page

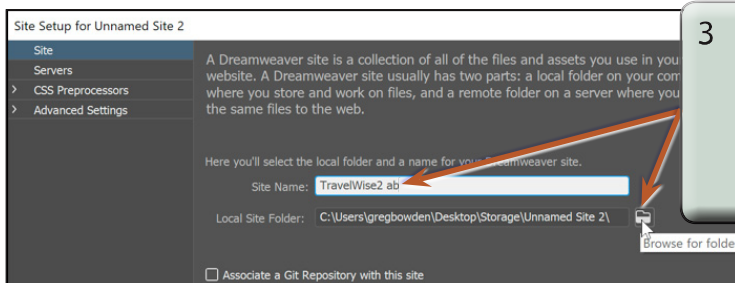
One of the best ways to learn how to use CSS styles to layout pages is to create a new site. A static web layout will be created initially to introduce the techniques before moving onto a responsive layout. The page layout will be created in this chapter, the content added to it in the next chapter and the layout formatting applied in Chapters 15 and 16.

The pages will have the following structure:



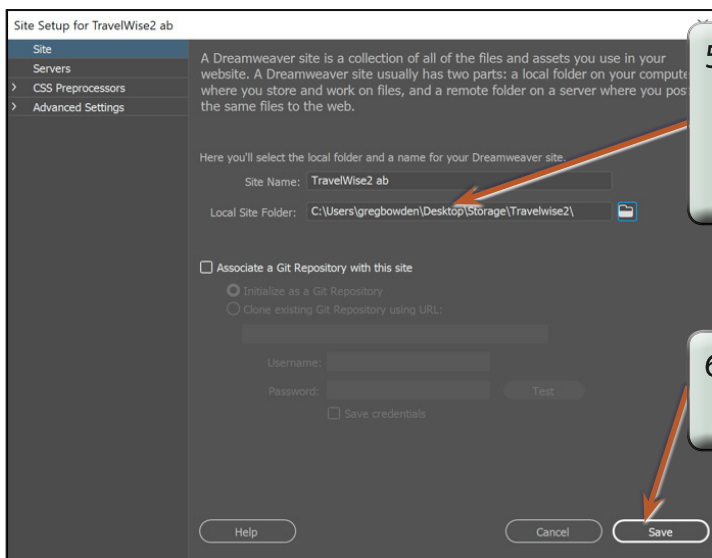
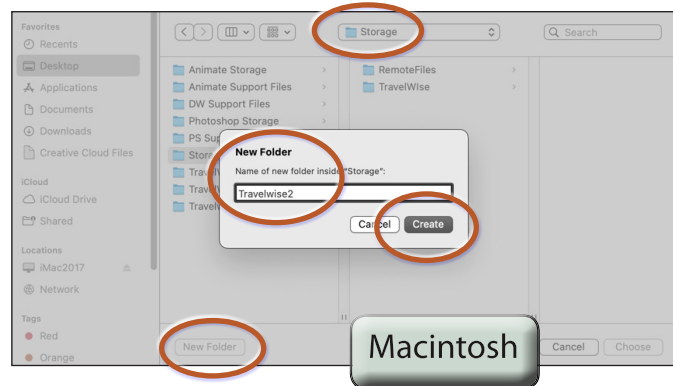
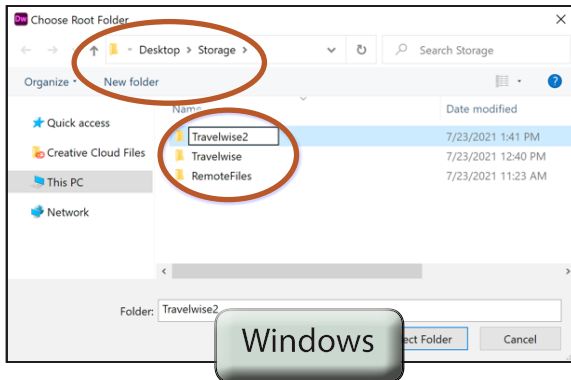
Starting a New Site

- 1 Load DreamWeaver or close the current documents.
- 2 Display the SITE menu and select NEW SITE.

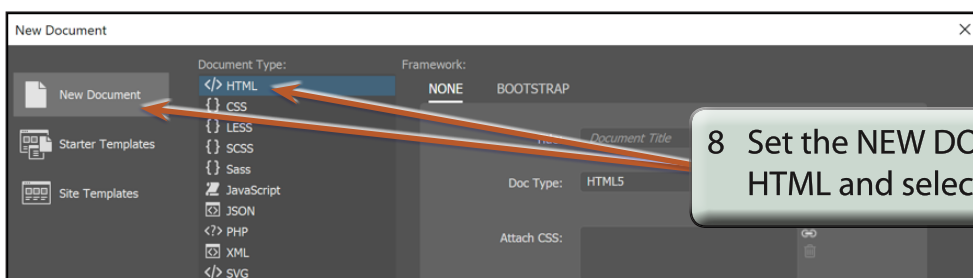


- 3 In the SITE NAME box enter:
TravelWise2 <your initials>
then click on the BROWSE icon next to the LOCAL SITE FOLDER box.

- 4 Access your STORAGE folder and create a new folder called TRAVELWISE2. Refer to the following diagrams.



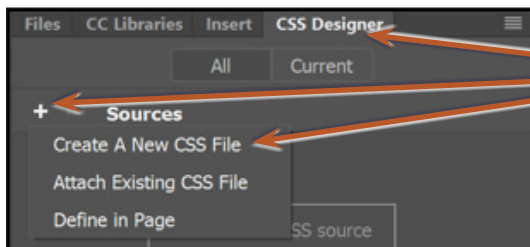
- 7 Select CREATE NEW from the START screen or select NEW from the FILE menu.



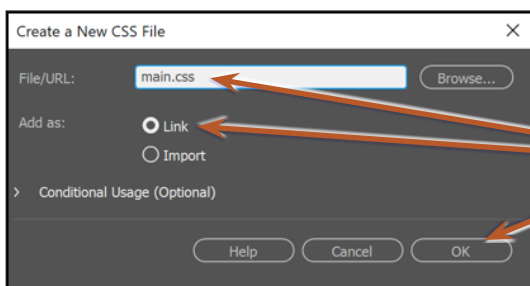
Saving the Pages

Two pages need to be saved. The blank HTML page and the external CSS page that will be used to store all the formatting and layout information.

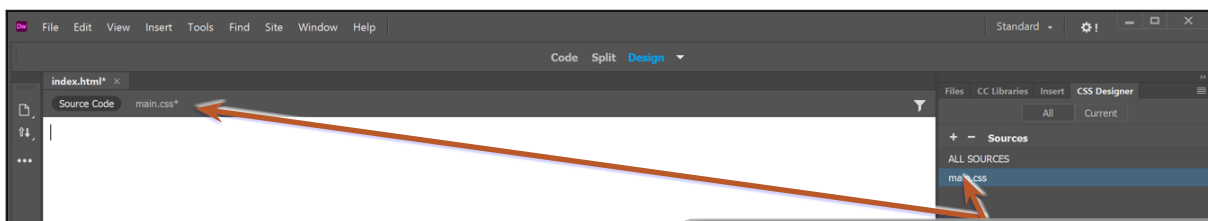
- 1 Save the page in your TRAVELWISE2 folder as:
index.html



- 2 Expand the CSS DESIGNER panel, click on the ADD CSS SOURCE button next to SOURCES and select CREATE A NEW CSS FILE.



- 3 In the FILE/URL box enter:
main.css
to name the CSS file, ensure that LINK is selected next to ADD AS and click on OK.



- 4 The MAIN.CSS file should be present in the SOURCES section of the CSS DESIGNER panel and it is also added to the RELATED FILES BAR.

NOTE: A new CSS page could have been created then attached to the INDEX page, but creating the CSS page from the CSS DESIGNER panel carries out those tasks in one step.

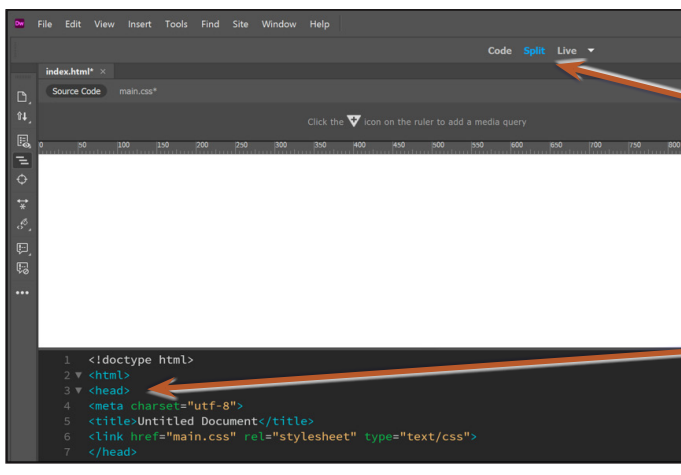
Setting the DIV Tags

When laying out a page using CSS, regions of the page are defined using DIVISION tags (DIV tags for short). The page to be created will have three divisions:

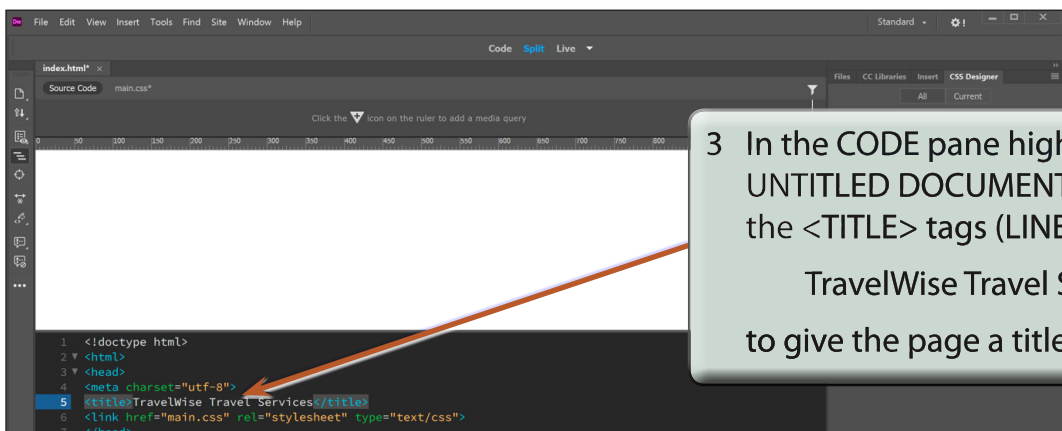
- Banner:** which will contain a logo for TravelWise.
- Navigation:** which will contain the top level navigation buttons.
- Columns:** which will contain a secondary navigation section and the main content of the page.

DIV tags will be used to set each of these sections.

A Looking at the Code



- 1 Set the view to LIVE and SPLIT in the DOCUMENT TOOLBAR to set the screen to show both the CODE and LIVE panes.
- 2 Notice that some sections of the code are labelled in <> brackets, for example: <head>, <title>, <link> and <body>. These are the HTML tags.



- 3 In the CODE pane highlight the UNTITLED DOCUMENT text between the <TITLE> tags (LINE 5) and enter:
TravelWise Travel Services
to give the page a title.

Adding Content to CSS Pages

Adding content to CSS page layouts is basically the same as adding content to normal pages. With CSS page layouts you need to take care to position the cursor in the required DIV tag.

Let's add a simple company logo, some navigation buttons and some text to the layout you created in the last chapter.

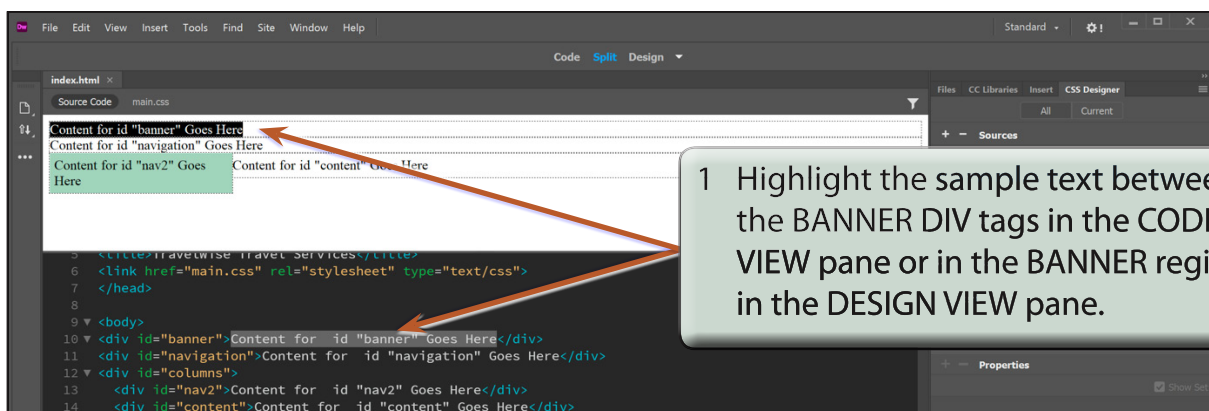
Inserting the Company Logo

The company logo will be placed in the BANNER region. This can be done in the CODE pane or in the DESIGN pane.

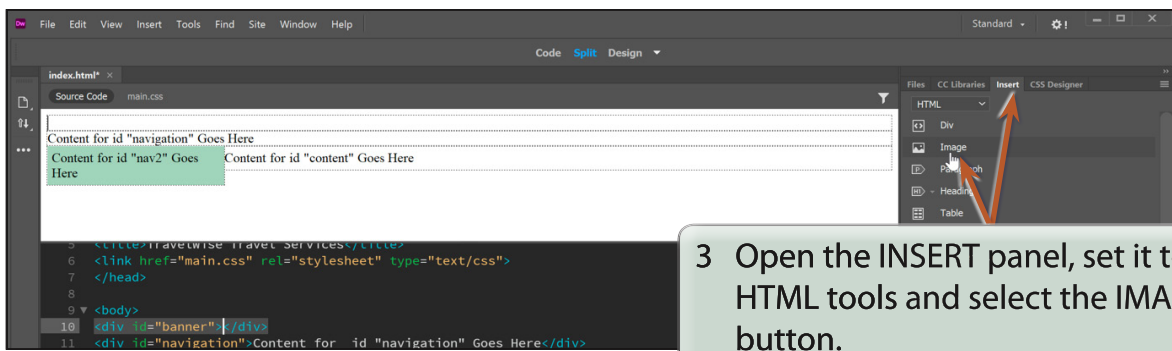
A Opening the Page

- 1 Load DreamWeaver and set the FILES panel to your TRAVELWISE2 site.
- 2 Open the INDEX.HTML page, set the screen to DESIGN VIEW then click on the SPLIT VIEW button to show both the CODE and DESIGN panes.

B Inserting the Image

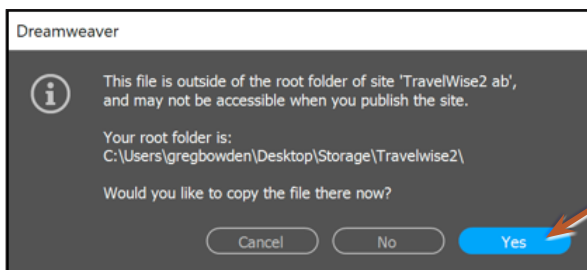
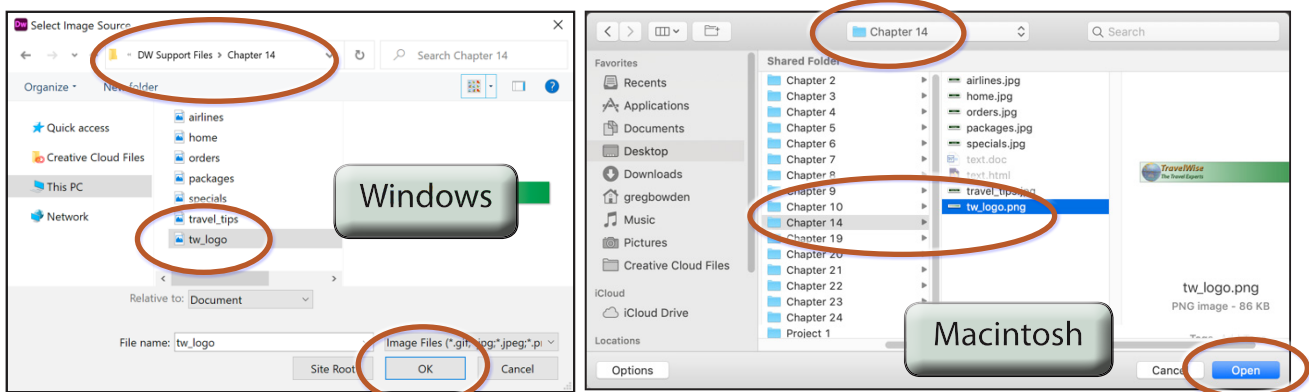


- 2 Press the **BACKSPACE** or **DELETE** key to remove the text.



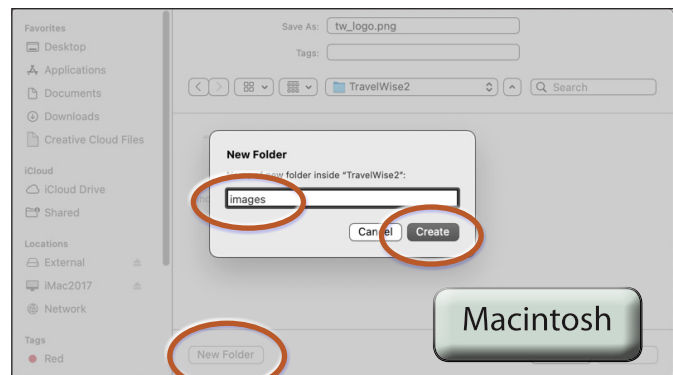
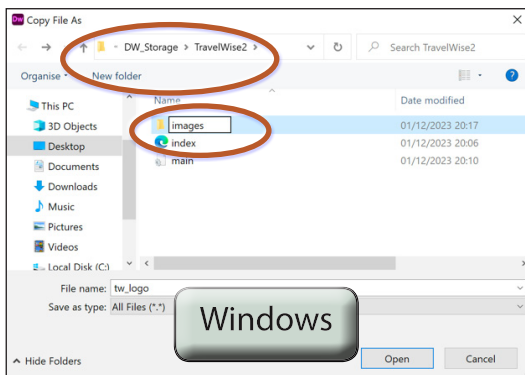
- 3 Open the INSERT panel, set it to the HTML tools and select the IMAGE button.

- 4 Access the DW SUPPORT FILES, open the CHAPTER 14 folder, select the TW_LOGO.JPG file and select OK or OPEN. Refer to the following diagrams.

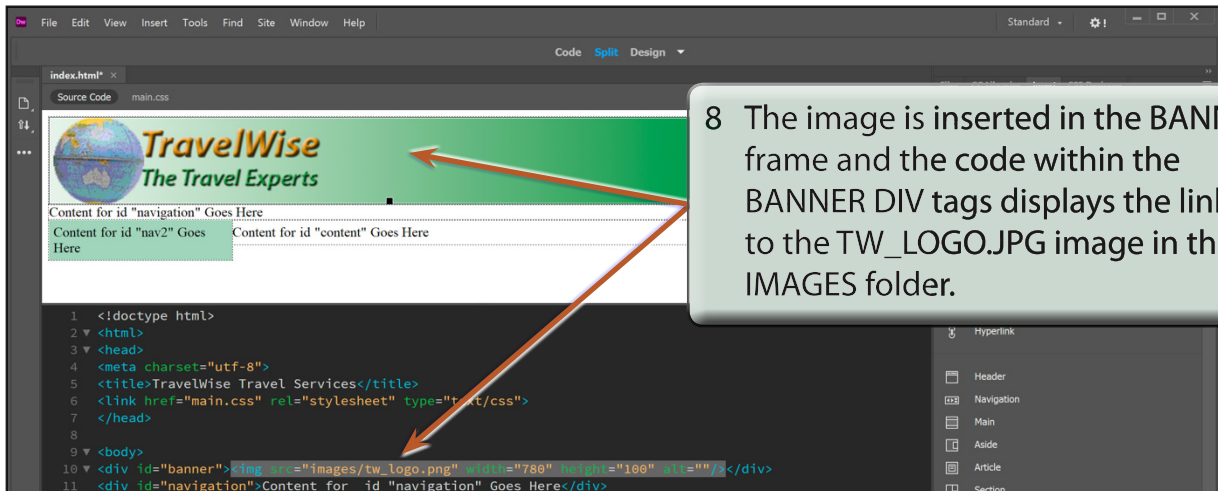


- 5 Click on YES to the dialogue box telling you that the image is outside the root folder of the TRAVELWISE2 site.

- 6 Create a NEW FOLDER in your TRAVELWISE2 folder called IMAGES. Refer to the following diagrams.



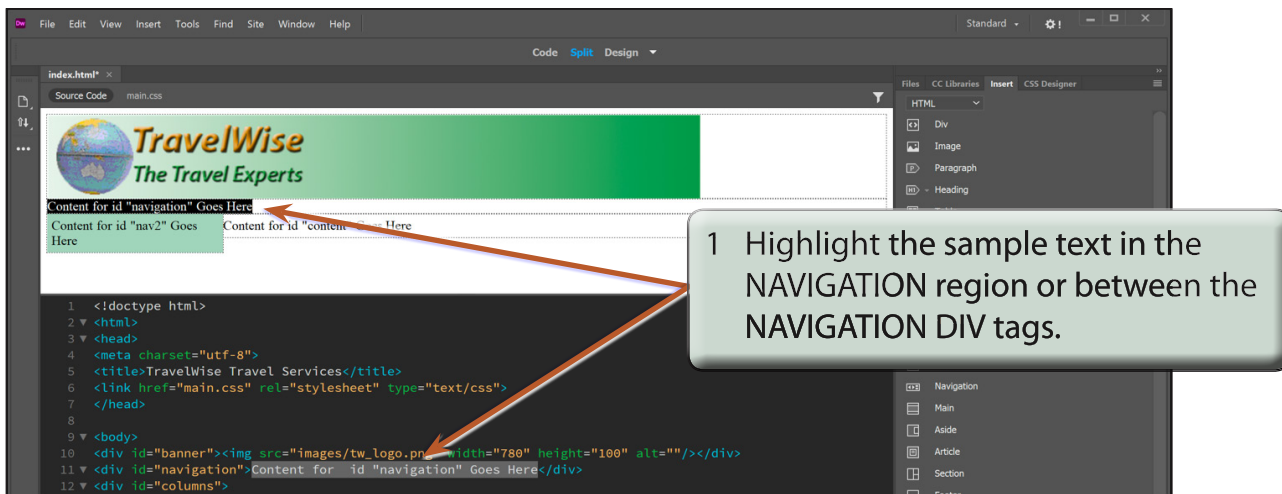
- 7 Open the folder and click on SAVE to insert the image.



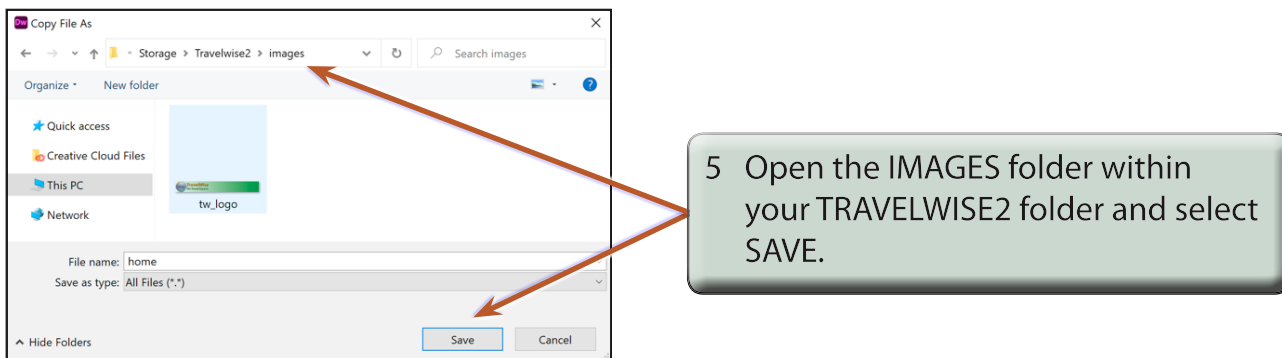
Inserting the Navigation Content

Some simple buttons will be inserted in the NAVIGATION section of the page.

A Inserting the Home Button



- 2 Press the **BACKSPACE** or **DELETE** key to remove the text.
- 3 Click on the **IMAGE** button in the HTML tools of the **INSERT** panel.
- 4 Access the **CHAPTER 14** folder of the **DW SUPPORT FILES** and insert the **HOME.JPG** image, selecting **YES** to the outside **ROOT FOLDER** message.



NOTE: You could create a **BUTTONS** folder within the **IMAGES** folder if you wish to, but we will not be building an entire web site here so storing buttons in the **IMAGES** folder will be sufficient.

Formatting CSS Pages

The formatting of CSS pages is carried out by setting the required styles. There are four different types of CSS styles:

Class: which are styles that apply to any HTML element.

Tag: where you create styles based on HTML tags such as the `<body>` tag.

ID: where you set styles on specific unique page elements such as DIV tags.

Compound: where you set styles on two or more class, tag or ID styles simultaneously.

These style types will be used to enhance the page you created in the last two chapters. In this chapter the CSS DESIGNER panel will be used to create the styles. In Chapter 13 you created a style by using the NEW CSS STYLE button in the INSERT DIV dialogue box. You will then be able to decide which method you prefer to use to create CSS styles.

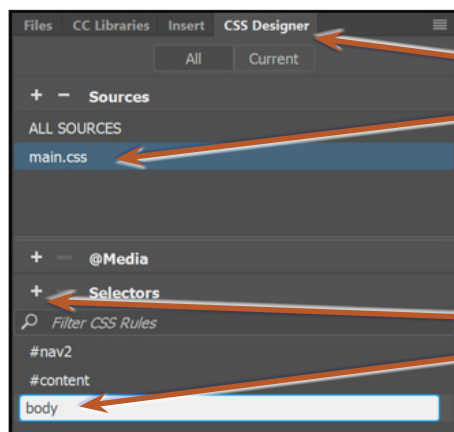
Setting Tag Styles

To illustrate how to set TAG styles the `<body>` and `<h1>` tags (for the BODY and the HEADING 1 styles) will be adjusted.

- 1 Load DreamWeaver and set the FILES panel to the TRAVELWISE2 site.
- 2 Open the INDEX.HTML page, set the screen to DESIGN VIEW and turn on SPLIT VIEW.

A The Body Tag

The body tag controls the format of the whole page. You can set some global formats using a style to control the body tag then make adjustments to other sections.

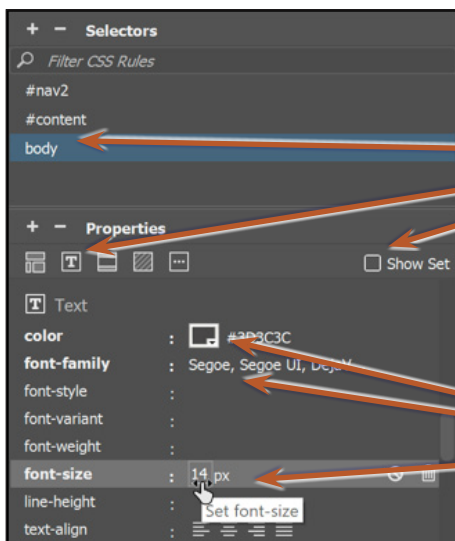


1 Open the CSS DESIGNER panel and select the MAIN.CSS file in the SOURCES section.

2 Click on the ADD SELECTOR (+) icon in the SELECTORS section and enter:

body

in the provided box.

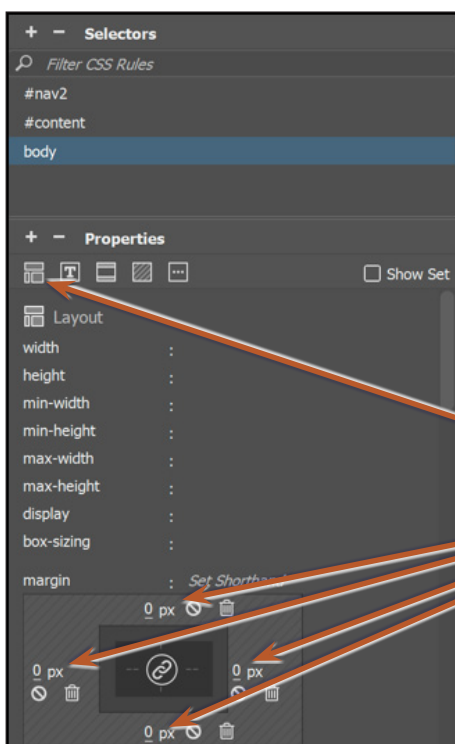


3 Press **<enter>** or **<return>** or select BODY in the drop down list so that the PROPERTIES are displayed. Check that SHOW SET is deselected and click on the TEXT icon to show the text properties.

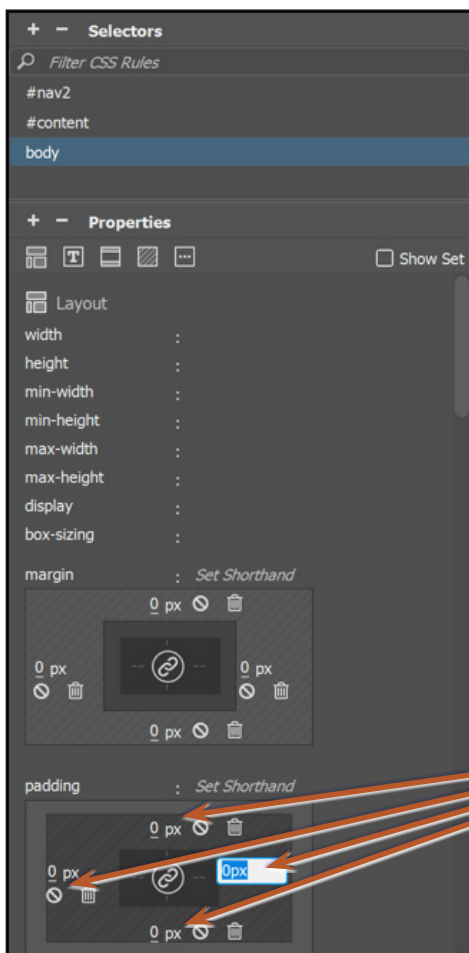
4 Set the COLOUR to DARK GREY and press **<enter>** or **<return>**, then set the FONT-FAMILY to SEGOE and the FONT-SIZE to 14 px.

NOTE: i These settings will become the default settings for all the text on the page.



ii You can provide more space for the CSS DEVELOPER panel by double clicking on the DOM panel to collapse it.



5 Click on the LAYOUT category icon at the top of the PROPERTIES section then click in each of the MARGIN boxes to turn them on and leave them set to 0. This adds the left, right, top and bottom margins to the style.

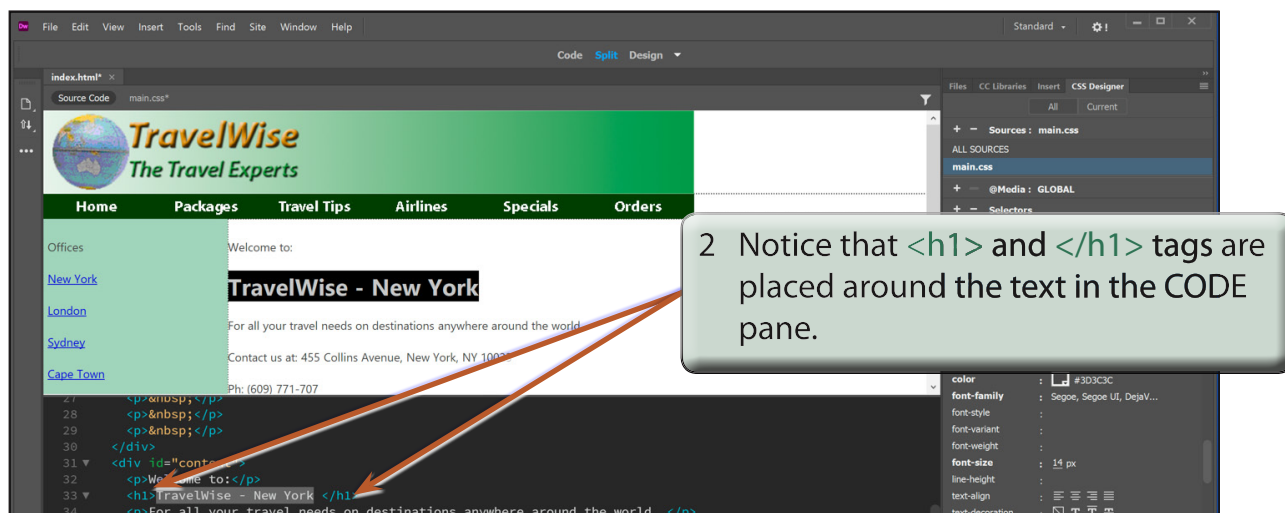
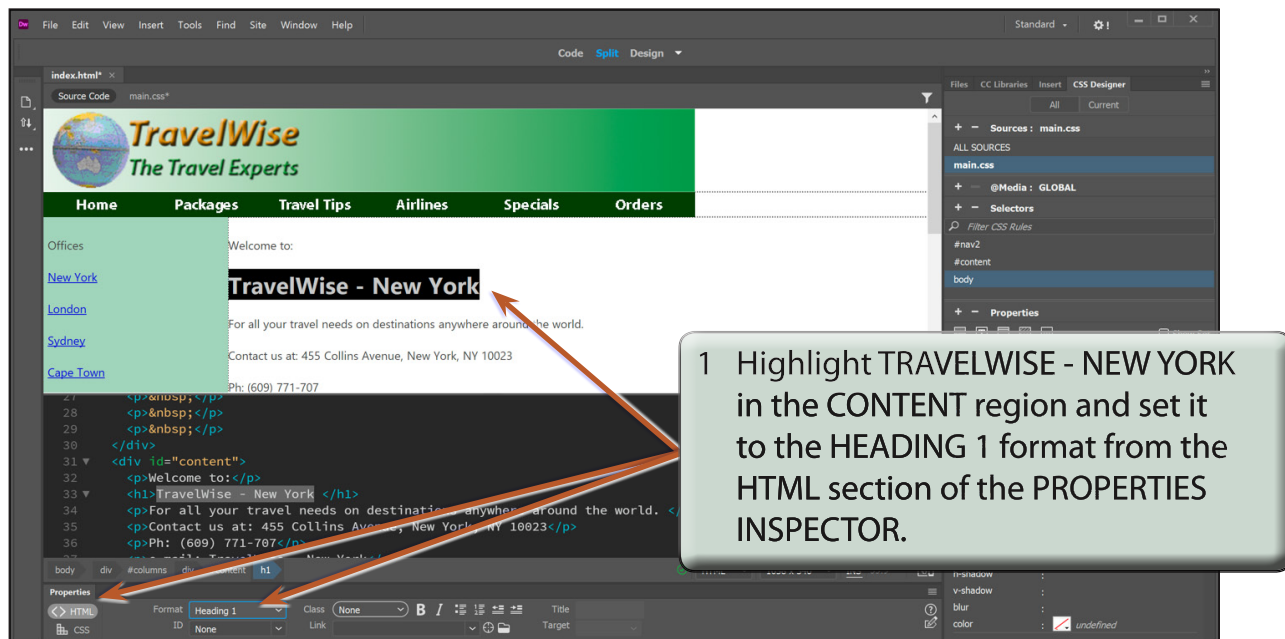


6 Click in each of the PADDING boxes to turn them on and leave them set to 0.

- NOTE:**
- i Setting the PADDING and MARGINS to 0 ensures that there is no white space at the top when the page is viewed in a browser.
 - ii The BODY style is added to the MAIN.CSS file in the CSS DESIGNER panel. All the HTML tags can be controlled in this fashion by creating a CSS style for them.
 - iii The PADDING and MARGIN values need to be clicked on to add their values to the style.
 - iv When the centre icon is set to ON  PADDING and MARGIN values are set to the same number.
 - v When the centre icon is set to OFF  PADDING and MARGIN values can be set to individual values.

B Changing Some Text

Now that you have set the default body text settings, some styles can be created to format the headings and sub-headings. You can modify some of the HTML tags or create your own styles. We will look at both methods.



Centring Static Web Pages

Web pages are now being displayed on a variety of different devices and monitor sizes so it has become common practice to centre a static web page and include a background behind the page. The process is very easy when pages are laid out using CSS styles.

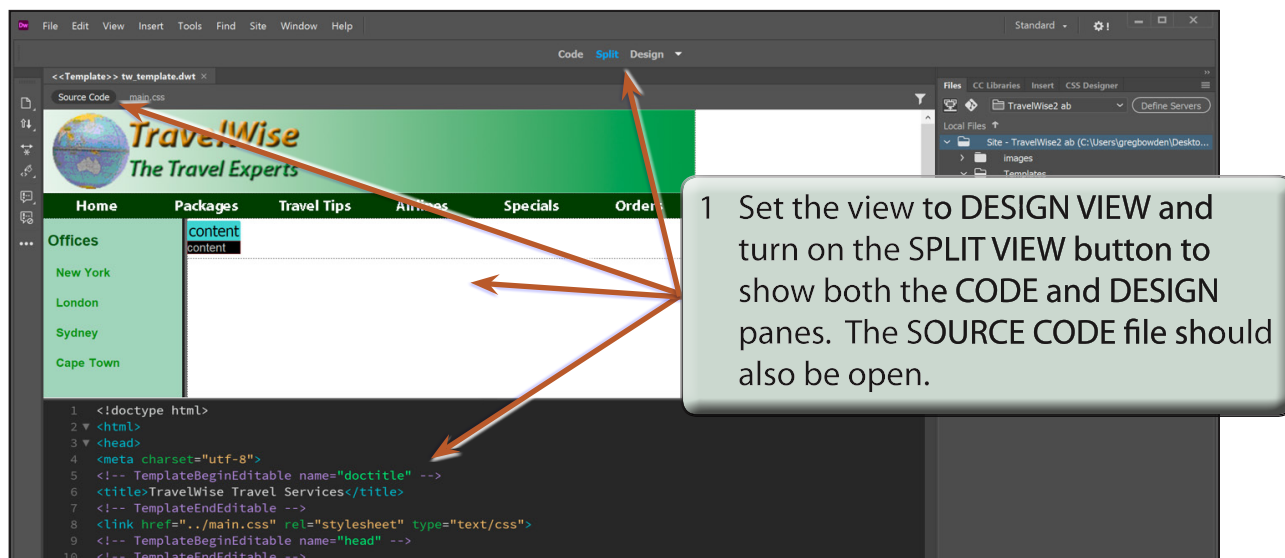
Creating a Container Region

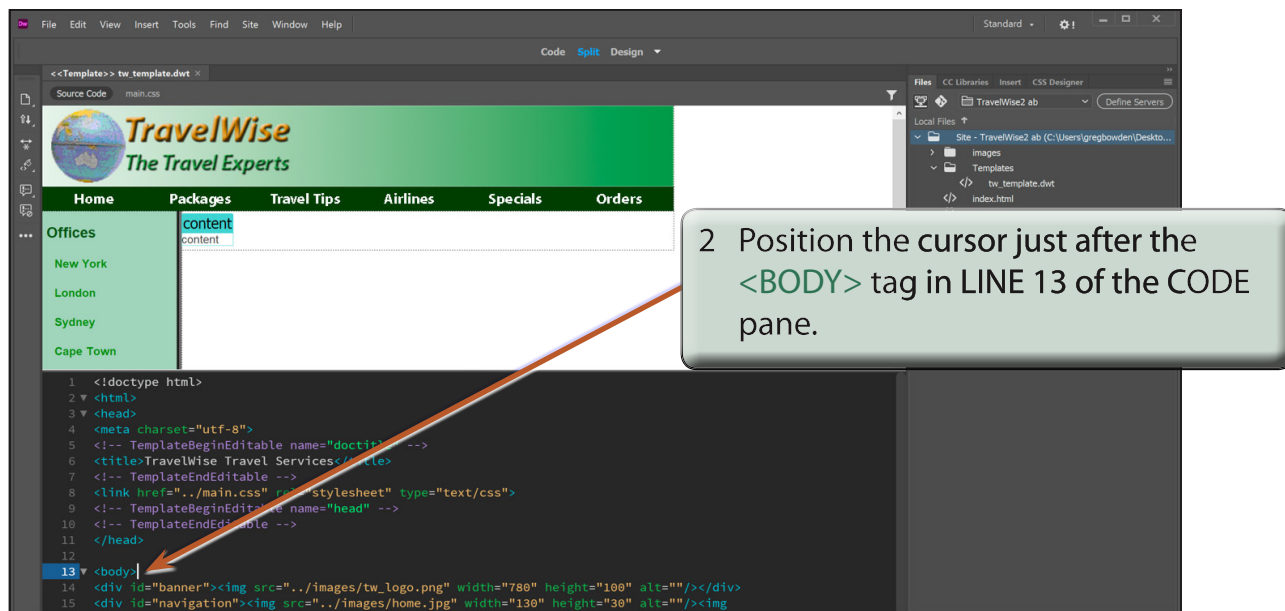
It is helpful to place the whole page within a containing region (DIV) so that formats can be applied to the whole page. This tag can then have a CSS style applied to it to centre its contents and set its background to a colour so that the content of the web page can be seen over a different coloured background.

A Opening the Page

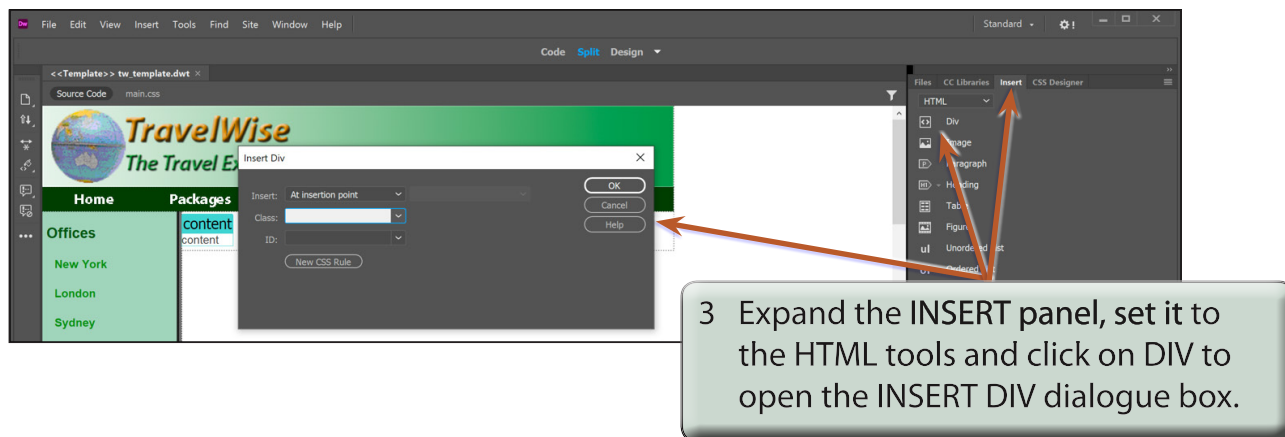
- 1 Load DreamWeaver and set the FILES panel to your TRAVELWISE2 site.
- 2 Open the TW_TEMPLATE.DWT file from the TEMPLATES folder of the FILES panel.

B Inserting the DIV Tag

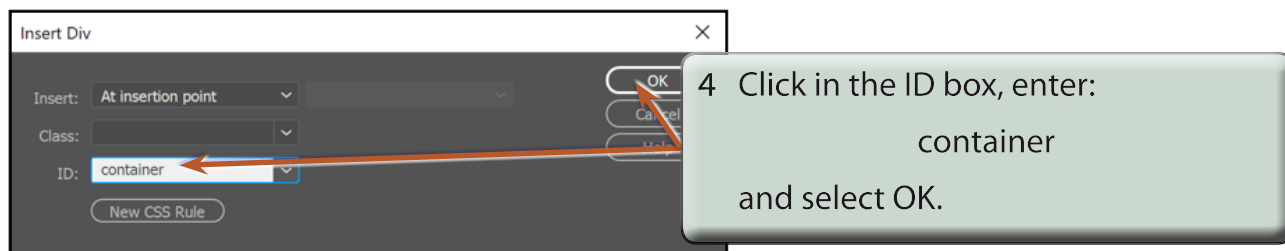




2 Position the cursor just after the `<BODY>` tag in LINE 13 of the CODE pane.



3 Expand the INSERT panel, set it to the HTML tools and click on DIV to open the INSERT DIV dialogue box.



4 Click in the ID box, enter: `container` and select OK.

NOTE: The CONTAINER region must be set to an ID DIV tag for the centring to work.

Responsive Web Page Layouts

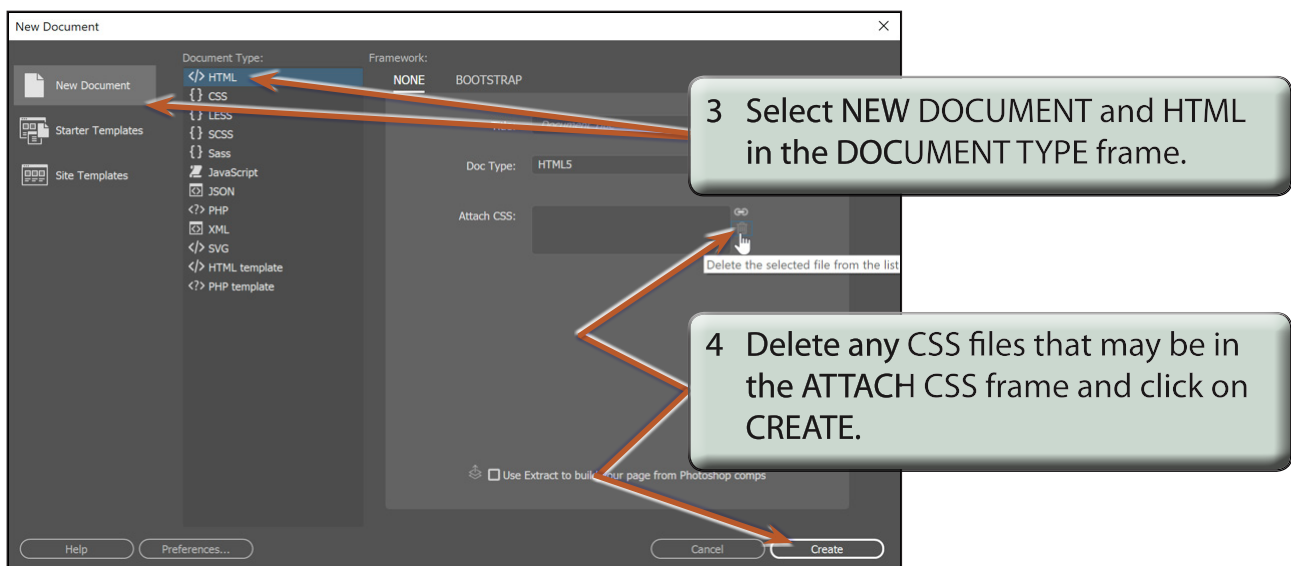
Most modern web designers use either an adaptive web design where the layout adapts for three different screen sizes or a responsive web layout where the layout can adapt to many different screen sizes. Responsive web layouts usually involve a lot more work.

In this chapter you will create a simplified responsive web layout and in the next chapter insert some content into it. The current site will be used, but a new CSS file will need to be created.

Creating the Files

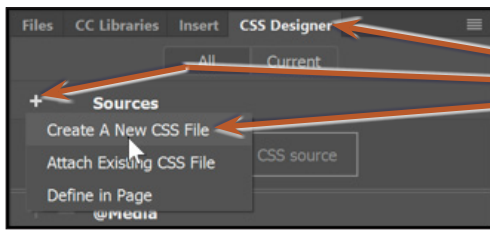
Two files will be created. An INDEX2.HTML page and a related CSS page that will store the layout and formatting code.

- 1 Load DreamWeaver or close the current pages and set the FILES panel to your TRAVELWISE2 site.
- 2 Select CREATE NEW from the START screen or select NEW from the FILE menu to start a new document.

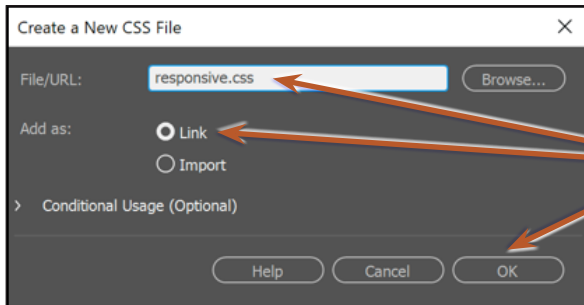


- 5 Save the page in your TRAVELWISE2 folder as:

index2.html



6 Open the CSS DESIGNER panel, click on the ADD CSS SOURCE (+) button and select CREATE A NEW CSS FILE.



7 In the CREATE A NEW CSS FILE dialogue box click in the FILE/URL box and enter:

responsive.css

Check that the ADD AS section is set to LINK and select OK.

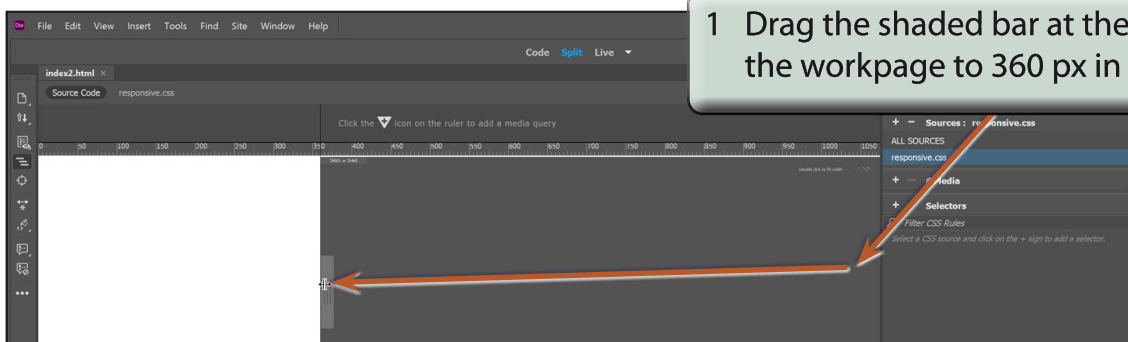
NOTE: The RESPONSIVE.CSS file should be added to the INDEX2.HTML file in the RELATED FILES BAR.

8 Turn on LIVE VIEW and set the screen to SPLIT VIEW.

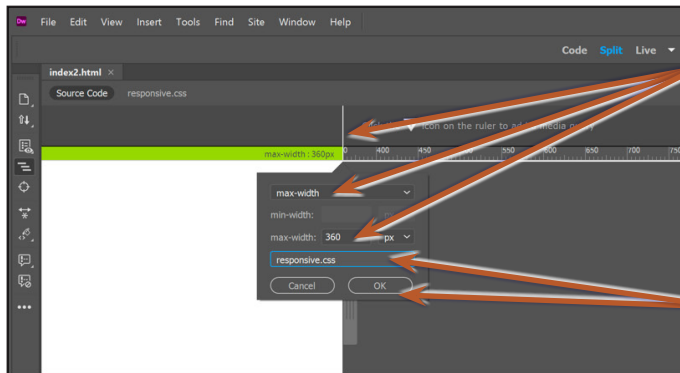
The Mobile Screen Settings

The first screen layout (called a media query) will be for mobile screens. There are many different mobile screen sizes, so you need to set a compromise. In this case a width of 360 px will be used. The height is not important as users will need to scroll their screens.

A Setting the Screen Width

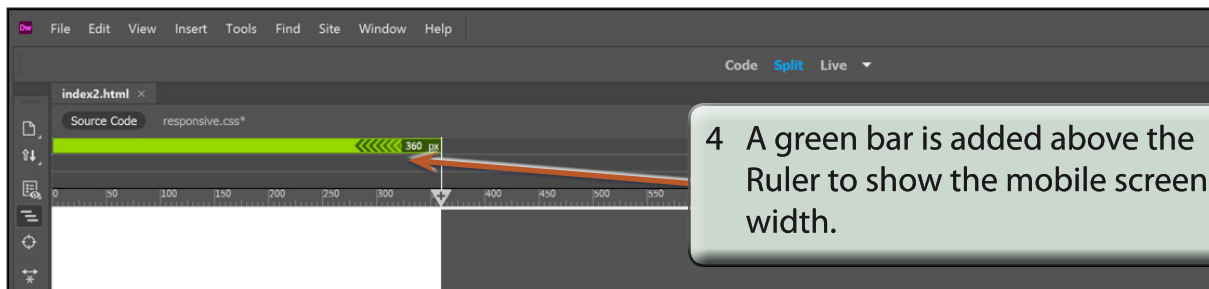


1 Drag the shaded bar at the right of the workspace to 360 px in the Ruler.



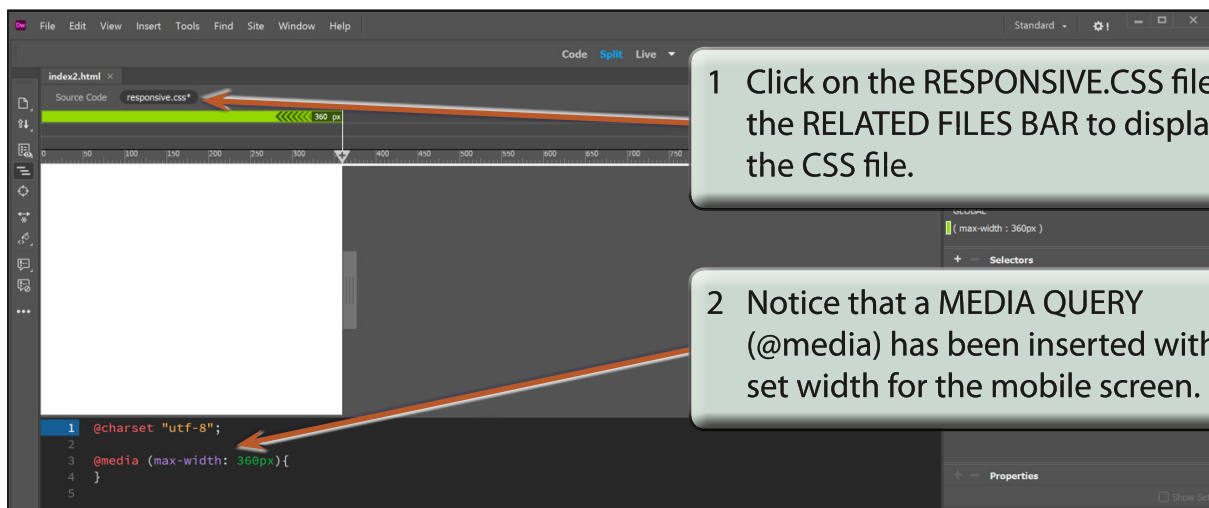
2 Click on the TRIANGLE icon at 360 px in the RULER to insert a media query. Leave the top box set to MAX-WIDTH and the MAX-WIDTH box below it set to 360 px.

3 Click on the CREATE A NEW CSS FILE box, select the RESPONSIVE.CSS file and select OK.



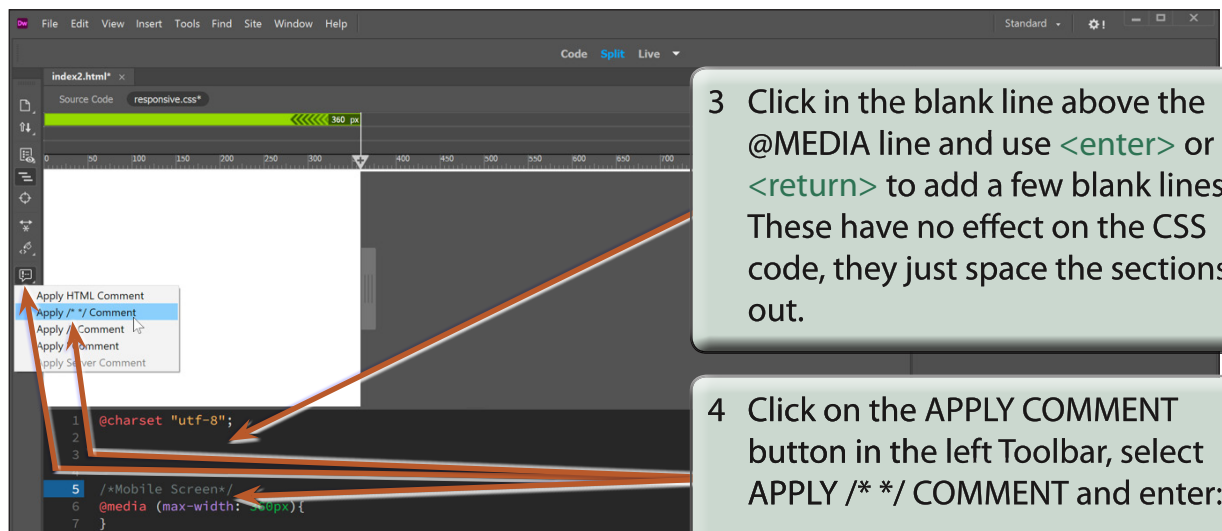
4 A green bar is added above the Ruler to show the mobile screen width.

B Looking at the CSS Code

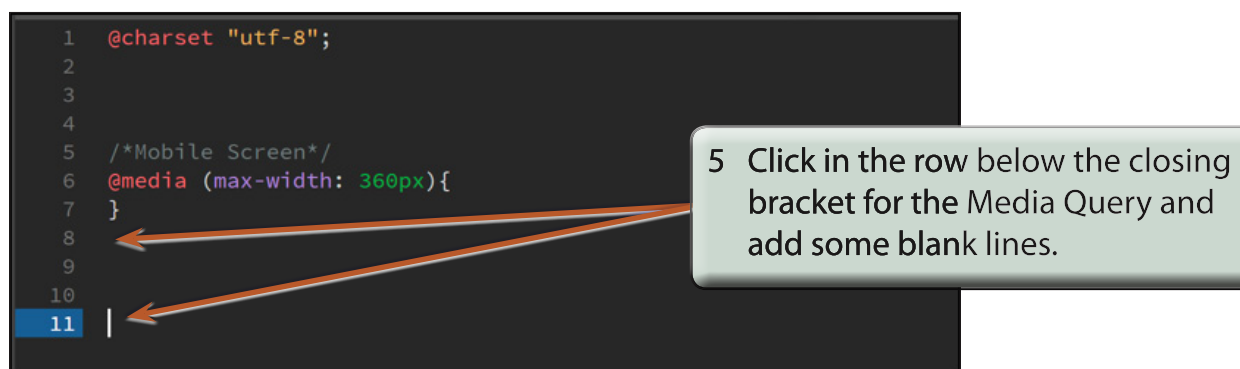


1 Click on the RESPONSIVE.CSS file in the RELATED FILES BAR to display the CSS file.

2 Notice that a MEDIA QUERY (@media) has been inserted with the set width for the mobile screen.



- NOTE:**
- i The comments are displayed in grey and they have no effect on the code. They simply allow you to label the different sections of the code to make editing easier.
 - ii Comments in a CSS document are enclosed between `/* */` symbols. You can enter these symbols directly or use the **APPLY COMMENT** button.



Adding Content to Responsive Layouts

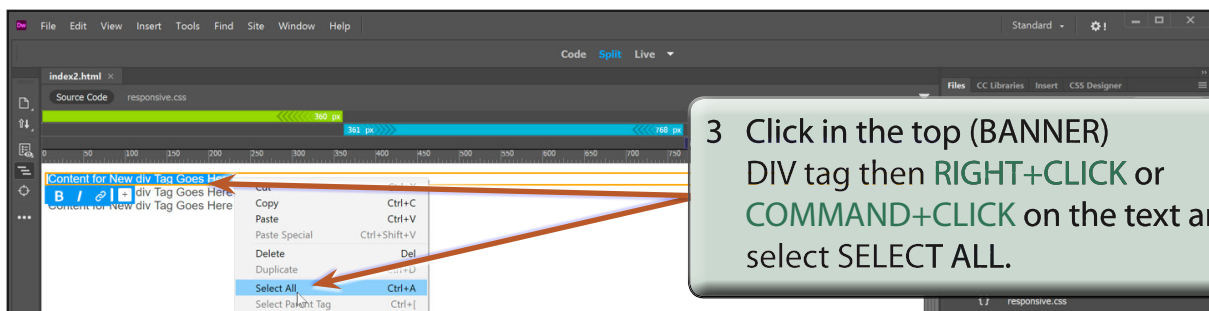
Now that the structure of the layout has been created, content can be added. Each DIV tag can have multiple styles applied to it from the different media queries.

The Banner Content

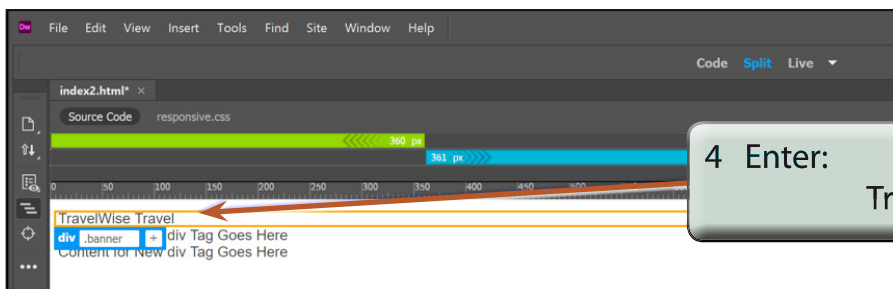
A simple banner for TravelWise Travel will be created so that it displays differently on the three different screen widths.

A Entering the Text

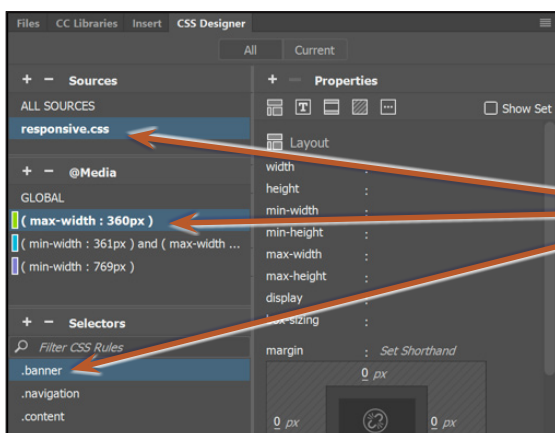
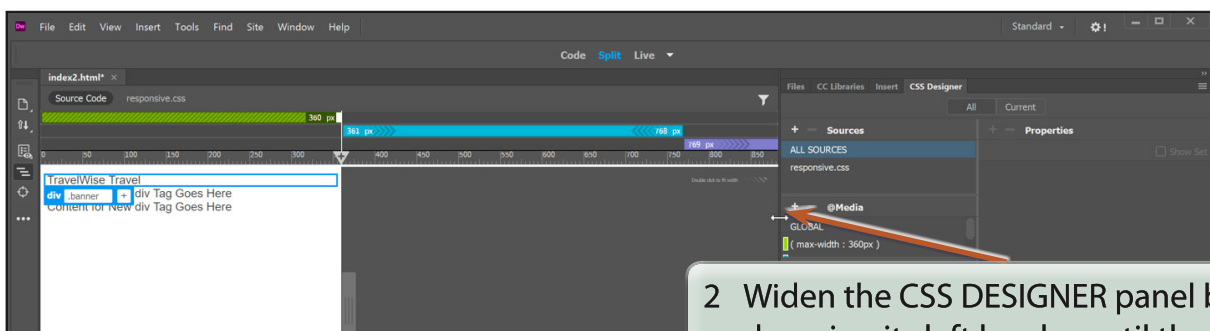
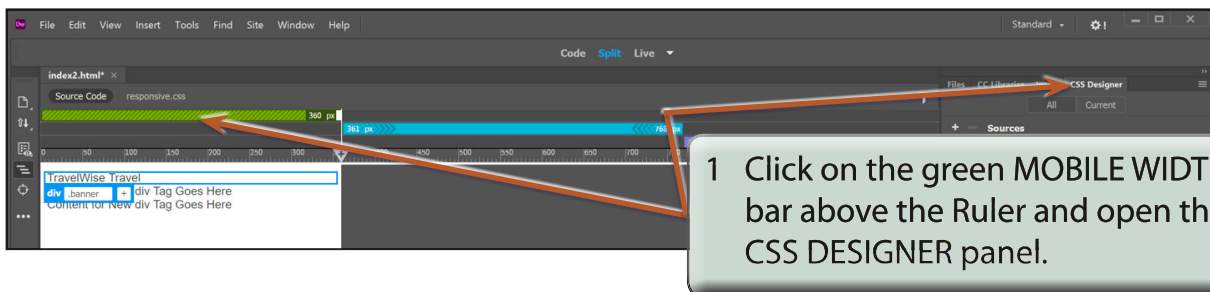
- 1 Load DreamWeaver or close all the open files then set the FILES panel to your TRAVELWISE2 site.
- 2 Open the INDEX2.HTML file and set the screen to LIVE VIEW.

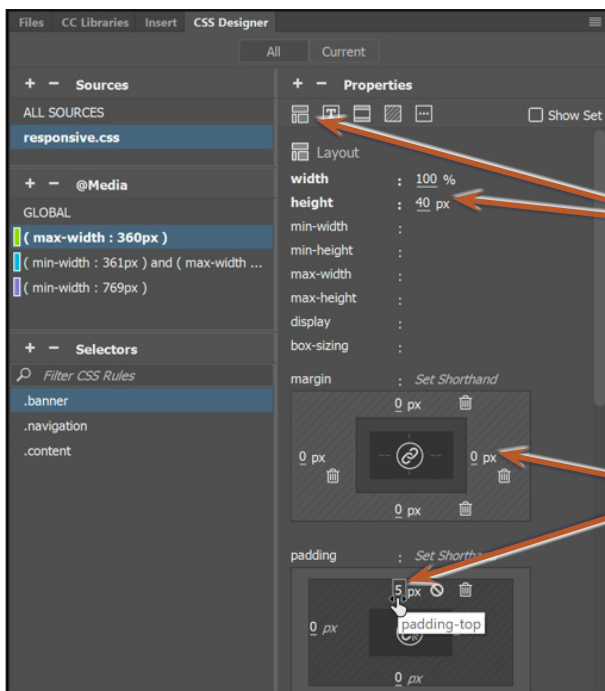


- NOTE:**
- i The sample text in the tag frame needs to be highlighted and the BOLD, ITALIC and HYPERLINK icons need to be displayed at the base of the frame.
 - ii It can be difficult at first to highlight DIV tag sample text in LIVE view. You can also double click in the DIV tag then press **CTRL+A** or **COMMAND+A** to select all the DIV tag text, or triple click the mouse button to highlight the sample text.




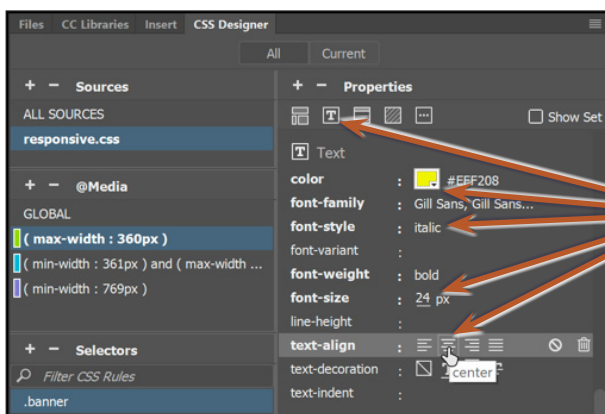
B Formatting the Mobile Banner Style



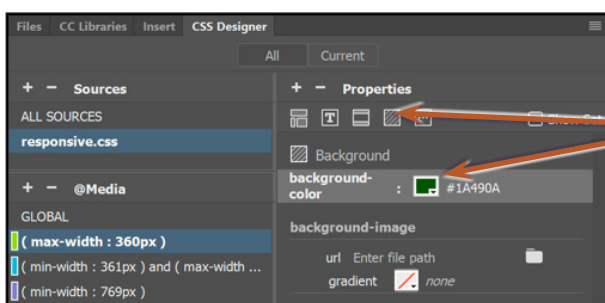


4 In the LAYOUT PROPERTIES section set the WIDTH to 100% and the HEIGHT to 40 px.

5 Click on each of the MARGIN boxes to set them to 0, and set just the TOP PADDING to 5 px. You will need to set the centre icon to off  to do this.

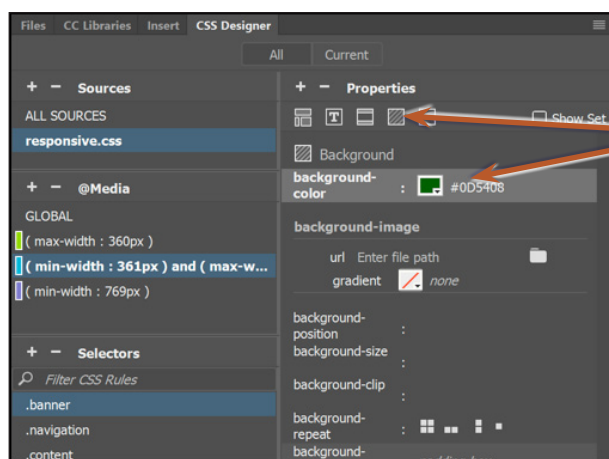
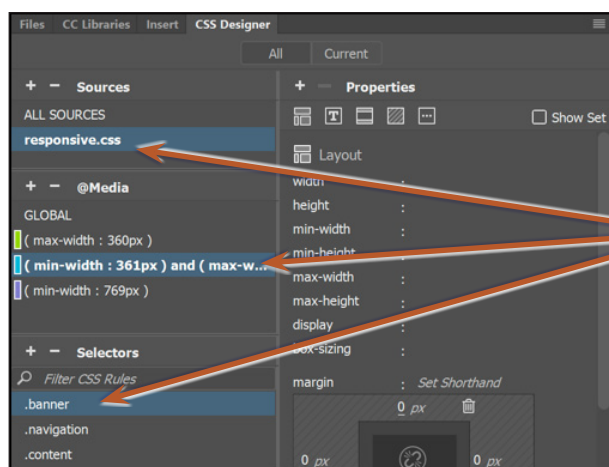
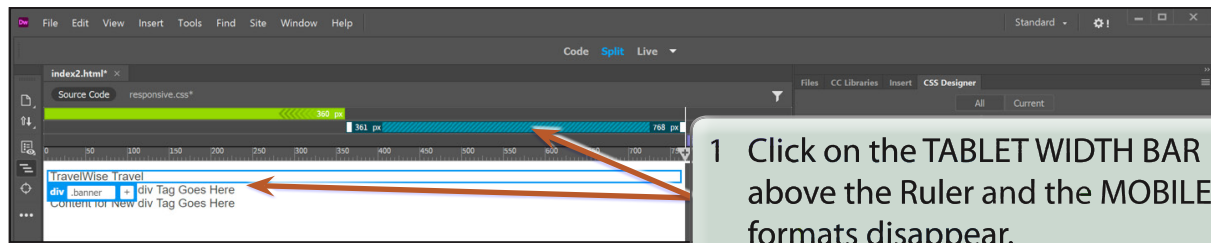


6 Open the TEXT PROPERTIES and set the COLOUR to YELLOW, the FONT-FAMILY to GILL SANS, the FONT-STYLE to ITALIC, the FONT-WEIGHT to BOLD, the FONT-SIZE to 24 px and the TEXT-ALIGN to CENTRE.



7 Open the BACKGROUND PROPERTIES and set the BACKGROUND COLOUR to DARK GREEN.

C Formatting the Tablet Banner Style



NOTE: You could copy the hexadecimal value for the DARK GREEN from the MOBILE settings to insert the same dark green. However, having a slightly different green will make the screen width changes easier to see.

Hiding Content in Responsive Layouts

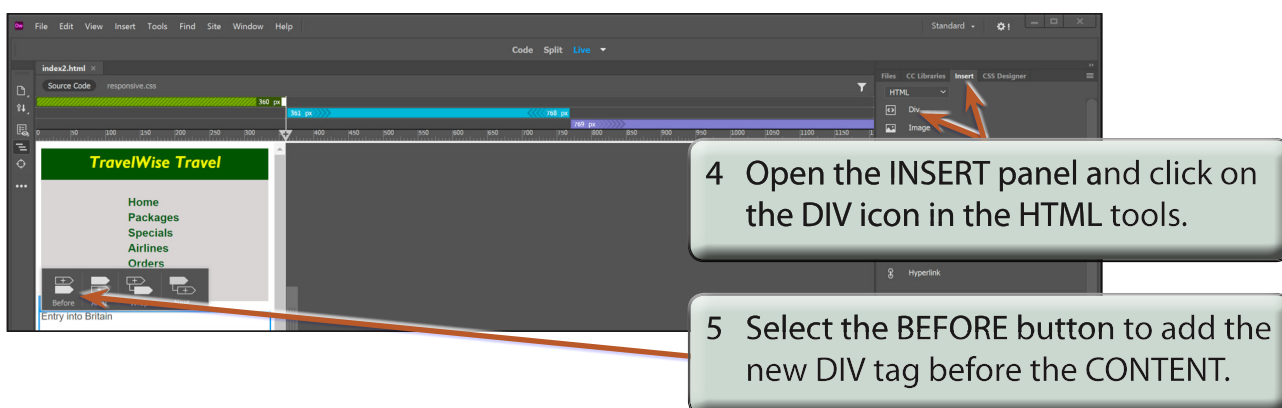
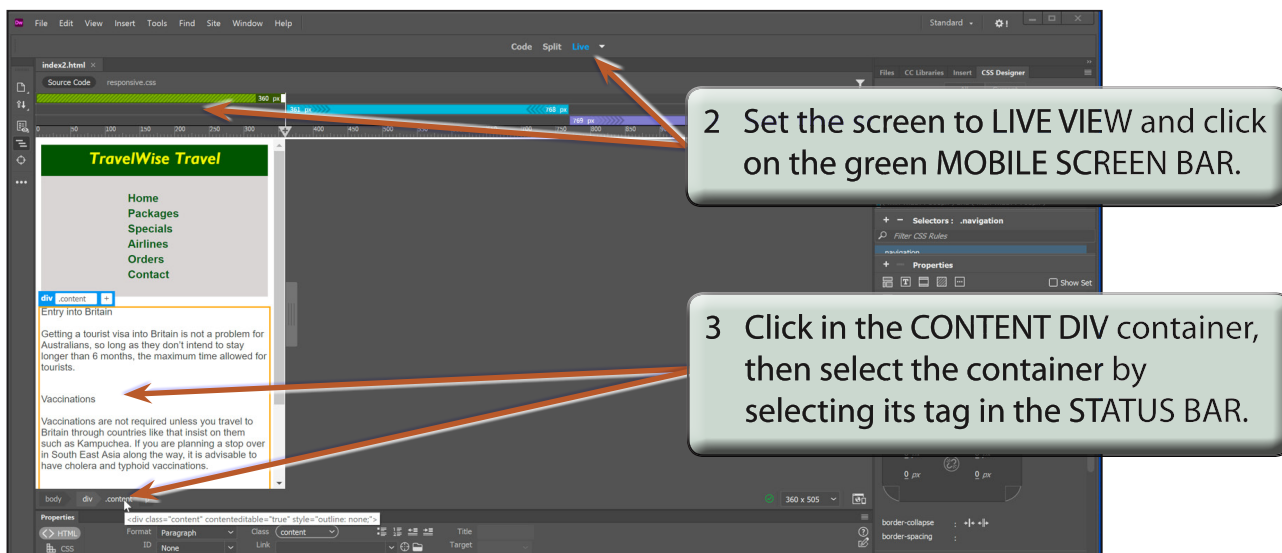
There are times when you want content to display in some screen sizes, but not in others. For example, you may want an image or a secondary navigation bar to show on the tablet and desktop screens, but not on the mobile screen.

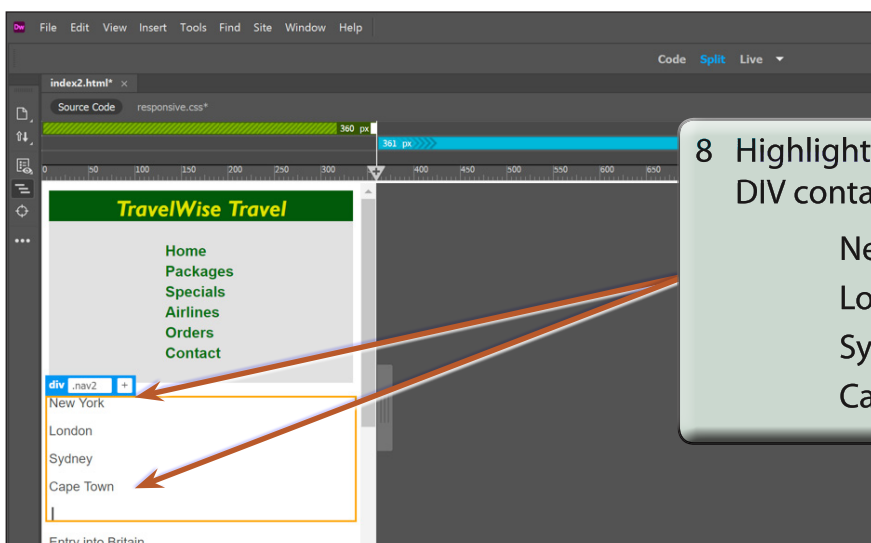
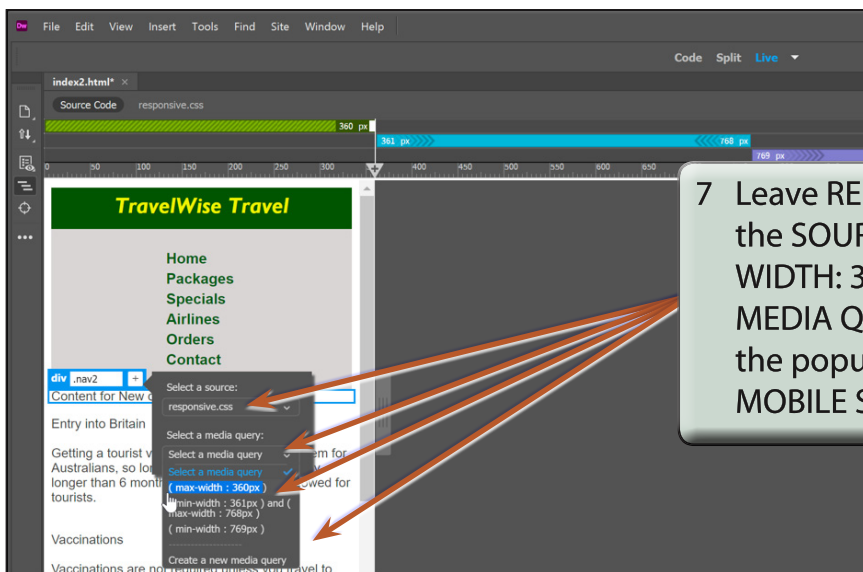
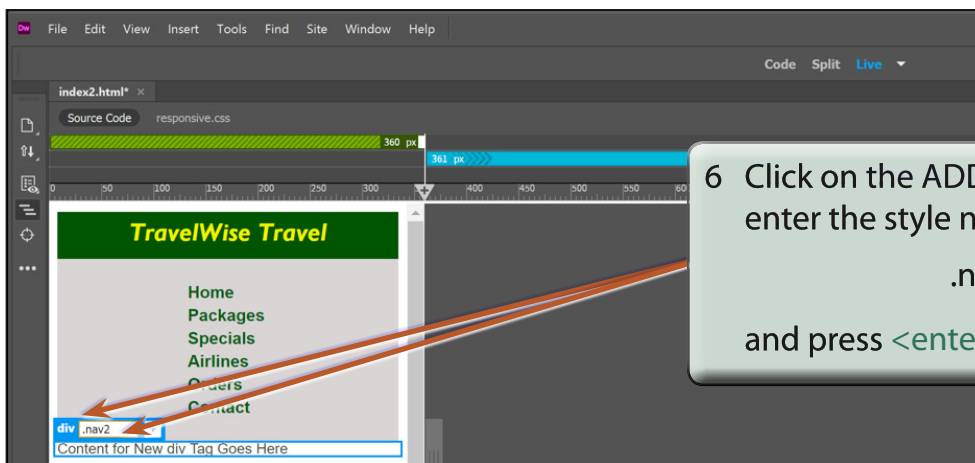
Hiding a Secondary Navigation Bar

A Creating the Navigation Bar

A secondary navigation bar will be added that will display at the left of the tablet and desktop screens only. Normally its DIV tag would be nested within a COLUMNS tag, but for simplicity, it will be added above the CONTENT tag and floated to its left.

- 1 Load DreamWeaver or close all the open files, set the FILES panel to your TRAVELWISE2 site and open the INDEX2.HTML file.





Using Behaviours

JavaScript is a web programming language that is much more powerful than HTML (HyperText Markup Language). In DreamWeaver you are able to utilise JavaScript commands without the need to understand the JavaScript language. One way you do this is through the Behaviours panel, which allows you to set events to occur on actions such as mouse presses or a page loading, etc. You have already used JavaScript when you created rollover buttons.

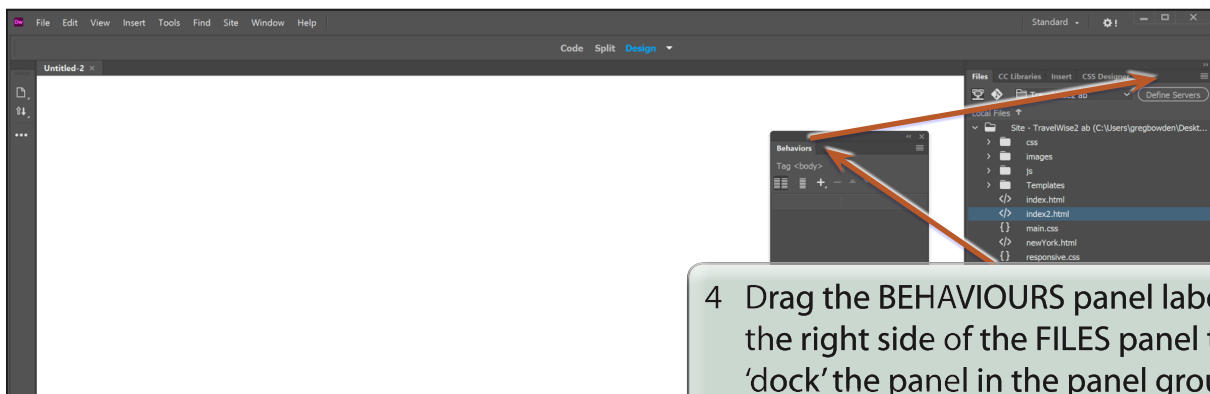
There are two sections to a BEHAVIOUR:

- an **ACTION** which might be a mouse click or a key press, and
- an **EVENT** which might be to add a popup message or validate fields in a form.

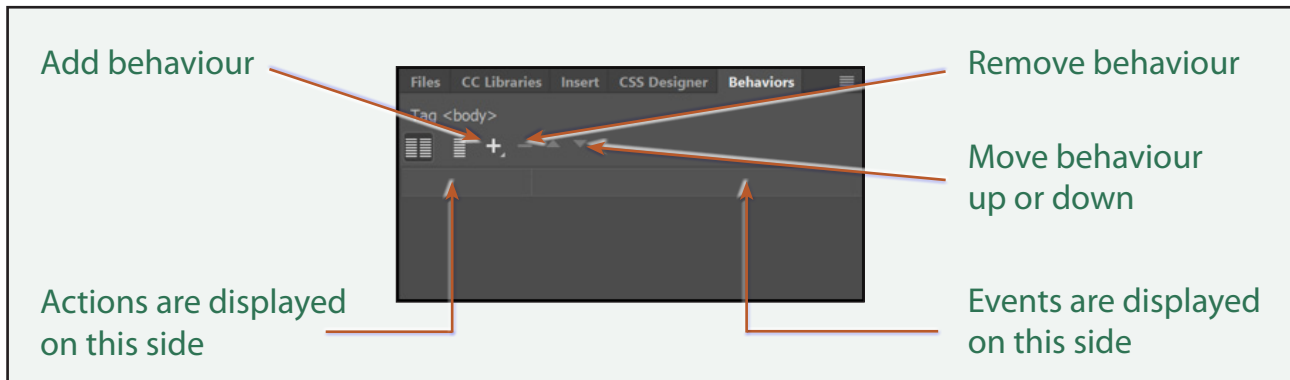
The Behaviours Panel

To simplify the use of behaviours, the static web layout will be used.

- 1 Load DreamWeaver or close the current files and set the FILES panel to the TRAVELWISE2 site.
- 2 Start a new HTML page and set the screen to DESIGN VIEW.
- 3 Display the WINDOW menu and select BEHAVIOURS to open the BEHAVIOURS panel (you can also press **SHIFT+F4** to open the BEHAVIOURS panel).



- 5 The BEHAVIOURS panel sections are labelled in the following diagram.



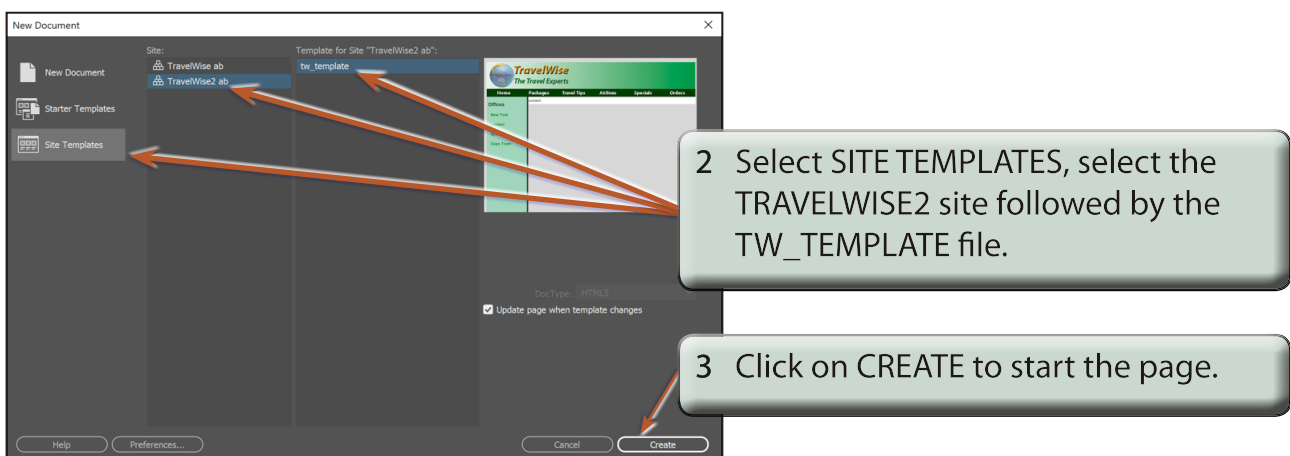
Popup Messages

A variety of popup text messages can be produced using the BEHAVIOURS panel. These popup messages can be set to occur when a mouse is clicked or moved over an image.

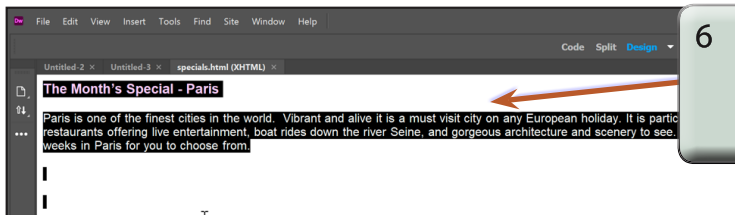
A Setting up a Page

A simple page will be created from the template so that behaviours can be set on it. The content of the page has been prepared for you.

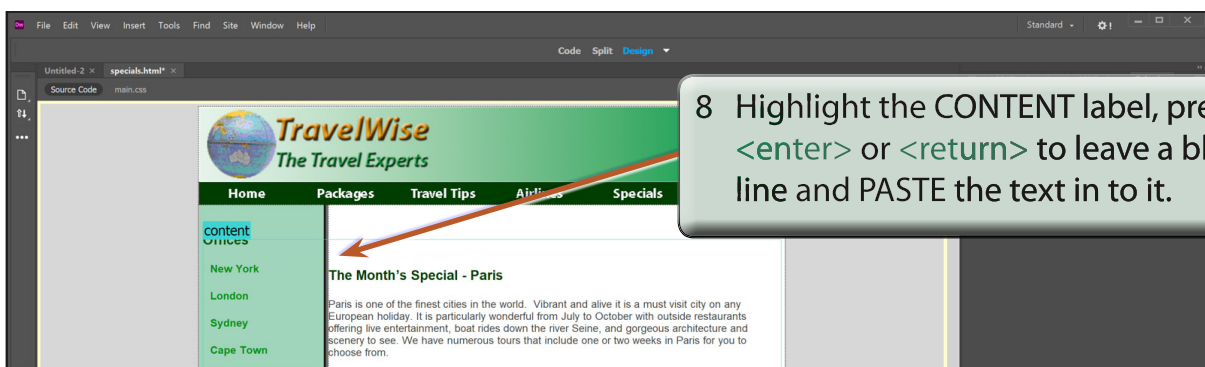
- 1 Display the FILE menu and select NEW.



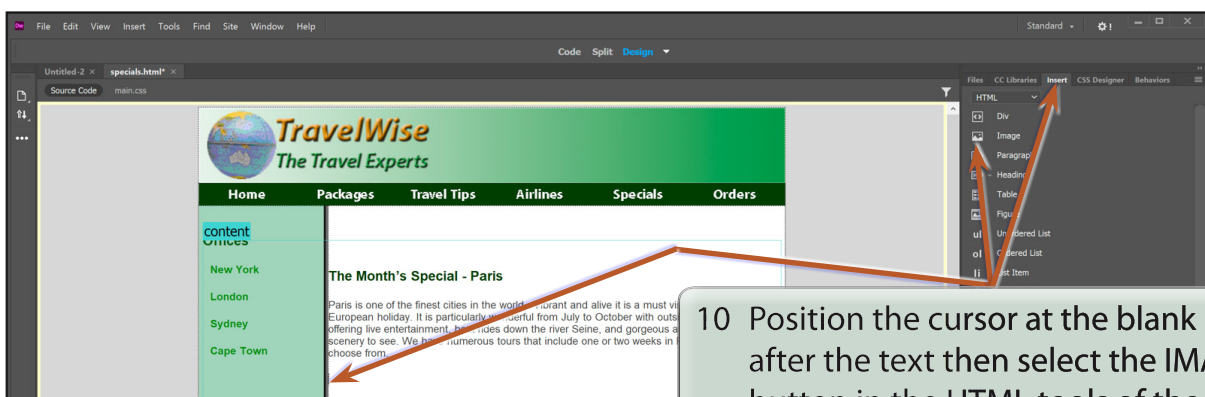
- 4 Display the FILE menu and select OPEN.
- 5 Access the CHAPTER 20 folder of the DW SUPPORT FILES and open the SPECIALS.HTML page.



- 7 Close the SPECIALS.HTML page.



- 9 Save the page in your TRAVELWISE2 folder as:
specials.html

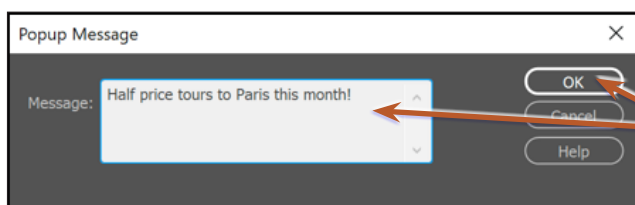
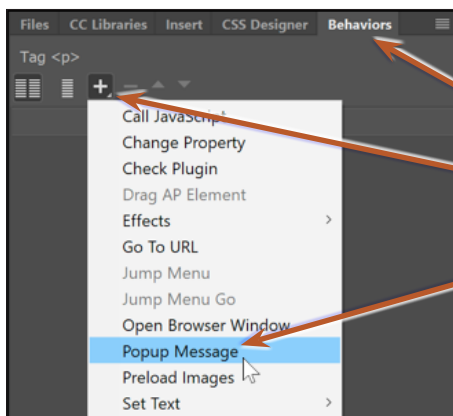


- 11 Insert the EIFFEL1 image from the CHAPTER 20 folder of the DW SUPPORT FILES and save the image in the IMAGES folder of your TRAVELWISE2 site.



B Popup Dialogue Boxes

You can set a behaviour to show a message when a user clicks on the image.



Importing Content and Media

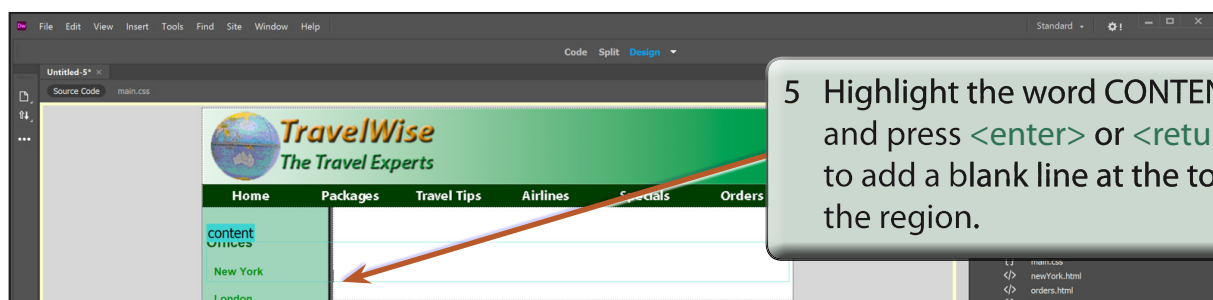
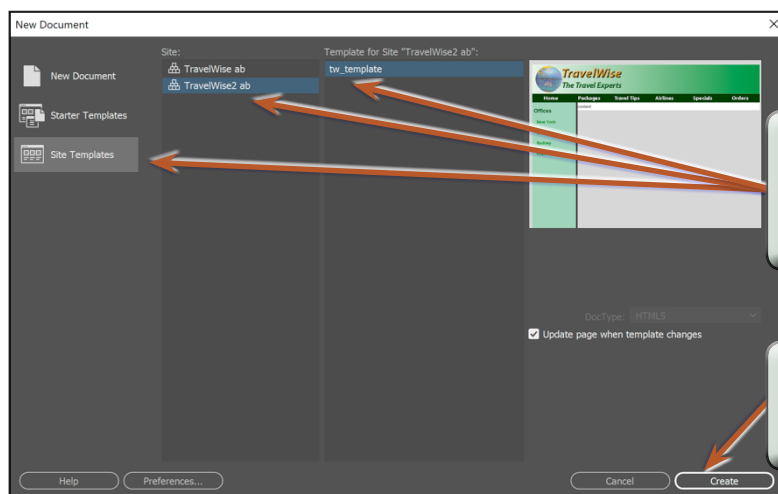
DreamWeaver allows you to import fully formatted Microsoft Word and Microsoft Excel documents, and to directly import media created in range of other programs such as Adobe Photoshop, Animate and FireWorks, this includes videos either directly from YouTube or from videos that you create yourself.

In this chapter you will create another SPECIALS page that provides information about tour packages on a selected city and a LONDON page that displays video content.

Starting the Page

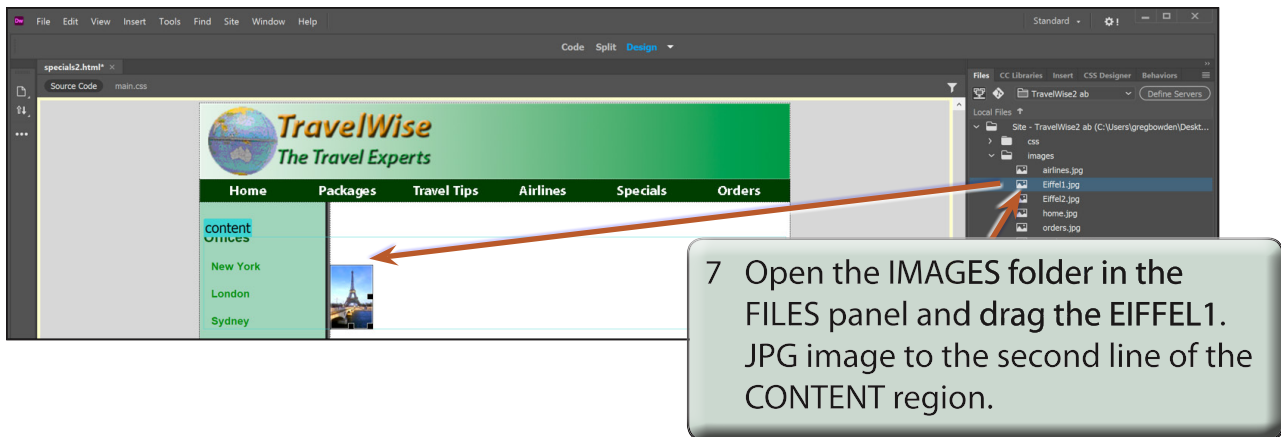
The page will be created from the TW_TEMPLATE file.

- 1 Load DreamWeaver or close the current page and set the FILES panel to your TRAVELWISE2 site.
- 2 Select CREATE NEW from the START screen or select NEW from the FILE menu.



- 6 Save the page in your TRAVELWISE2 folder as:

specials2.html



Importing Microsoft Word Documents

When content is added from Microsoft Word and Microsoft Excel directly into your DreamWeaver pages, that content retains the formatting done in Word or Excel. This means that you can produce your content in those programs or use content that you may already have.

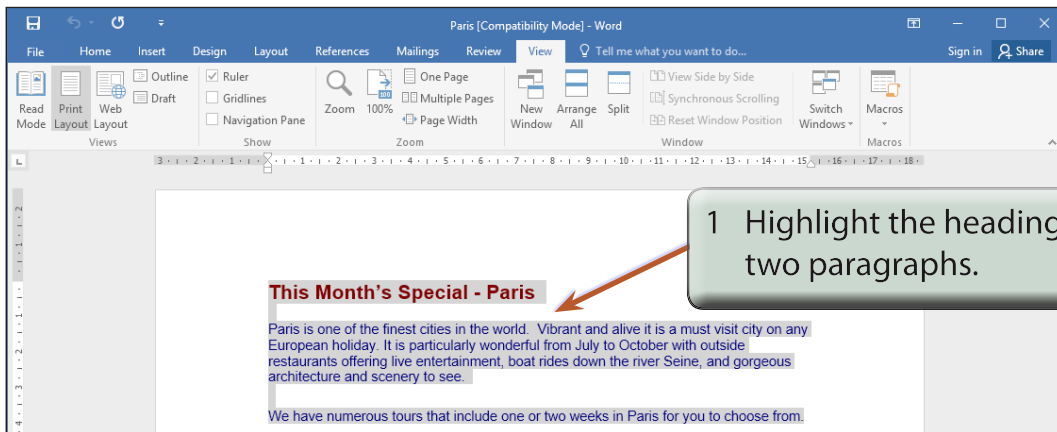
Let's add some text from a formatted Microsoft Word document that has been prepared for you into the SPECIALS2.HTML file

A Opening the Prepared Word Document

- 1 Open Microsoft Word.
- 2 Click on the OPEN button in the opening screen.
- 3 Access the DW SUPPORT FILES, open the CHAPTER 21 folder and load the file:

Paris.doc

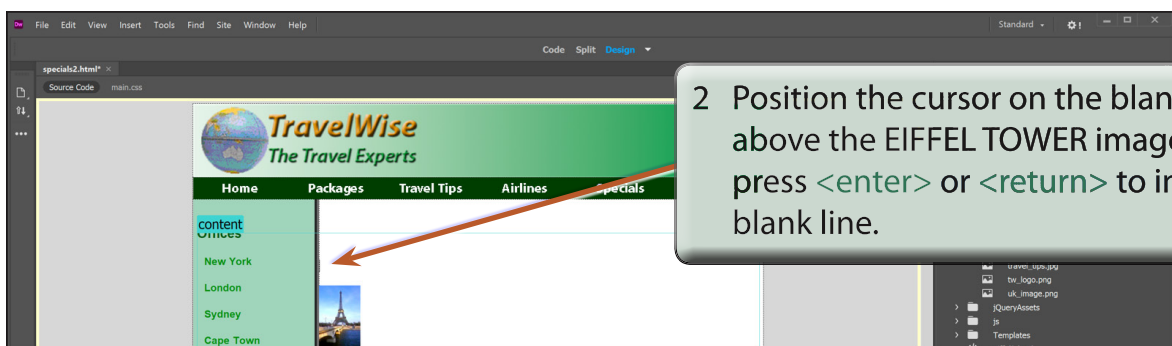
B Copying the Microsoft Word Text



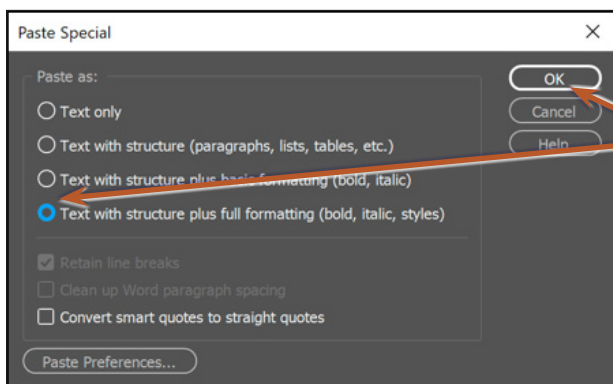
- 2 Press **CTRL+C** or **COMMAND+C** to copy the text.

C Pasting the Text into DreamWeaver

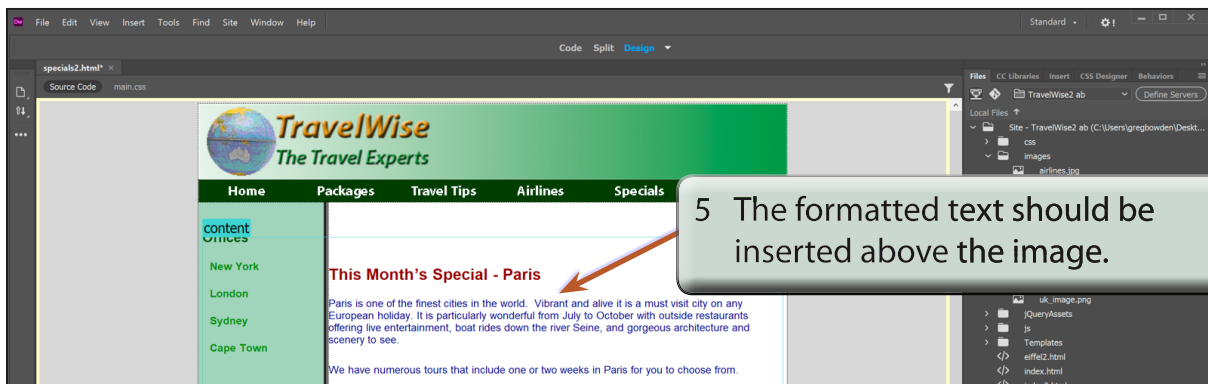
- 1 Return DreamWeaver to the screen (you can click on its tab or icon at the bottom of the Windows screen or click on the DreamWeaver icon in the DOCK at the bottom of the Macintosh screen).



- 3 Display the EDIT menu and select PASTE SPECIAL.



4 Select the TEXT WITH STRUCTURE PLUS FULL FORMATTING option and click on OK.



5 The formatted text should be inserted above the image.

- NOTE:**
- i If you select PASTE from the EDIT menu the text is inserted without any formatting.
 - ii You can create CSS styles from the formatted text that you import from Microsoft Word.

Code Snippets

Code Snippets are small packets of HTML and CSS code that can be inserted into web pages at any time or at any position.

DreamWeaver provides prepared snippets of common web components such as navigation bars or you can create and store your own snippets.

Preset Snippets

A Opening the Snippets Panel

- 1 Load DreamWeaver or close the current files and set the FILES panel to your TRAVELWISE2 site.
- 2 Select CREATE NEW from the START screen or select NEW from the FILE menu and start a HTML page.
- 3 Expand the SNIPPETS panel in the PANEL GROUP. It is next to the ASSETS panel.

4 Widen the PANEL GROUP by dragging its left border to the left.

5 Expand the HTML_SNIPPETS and widen the NAME column by dragging the NAME border to the right so that you can see the full names of the snippets.

Name	Trigger Key	Description
Bootstrap Snippets		
CSS Animation ... Transitions		
CSS Effects		
CSS Snippets		
HTML Snippets		
Add a Favicon		Add a favicon
Add Lorem Ipsum		Quickly add some dummy text
Adding a Mailto Link		Quickly hyperlink text to an email address

- 6 Set the VIEW to SPLIT view so that you can see the code provided by the snippets.

B Inserting Prepared Snippets

1 Drag the CREATE A NAVIGATION BAR snippet on to the page

2 The code for the snippet is inserted between the BODY tags.

The screenshot shows the Adobe DreamWeaver 21.3 interface. On the left, the 'Files' panel shows a list of files including 'Privacy', 'Sitemap', 'Newsletter', and 'My Account'. The main workspace displays the HTML code of an 'Untitled Document'. The code is as follows:

```
<!doctype html>
<html>
<head>
<meta charset="utf-8">
<title>Untitled Document</title>
</head>
<body>
<nav class="navigation">
<ul>
<li><a href="#"><span>Privacy</span></a></li>
<li><a href="#"><span>Sitemap</span></a></li>
<li><a href="#"><span>Newsletter</span></a></li>
<li class="account"><a href="#"><span>My Account</span></a></li>
</ul>
</nav>
</body>
```

On the right, the 'Snippets' panel is open, showing a list of snippets. The 'CREATE A NAVIGATION BAR' snippet is selected. An arrow points from this snippet to the 'My Account' link in the code. Another arrow points from the 'CREATE A NAVIGATION BAR' snippet to the space between the 'BODY' tags in the code.

NOTE: The NAVIGATION BAR snippet is a group of formatted text links. All you would need to do is change the text and set the links to complete the navigation bar.

3 Drag the CREATE A BACK BUTTON snippet to the page and it is added below the navigation bar

The screenshot shows the Adobe DreamWeaver 21.3 interface. On the left, the 'Files' panel shows a list of files including 'Privacy', 'Sitemap', 'Newsletter', and 'My Account'. The main workspace displays the HTML code of an 'Untitled Document'. The code is as follows:

```
<html>
<head>
<meta charset="utf-8">
<title>Untitled Document</title>
</head>
<body>
<nav class="navigation">
<ul>
<li><a href="#"><span>Privacy</span></a></li>
<li><a href="#"><span>Sitemap</span></a></li>
<li><a href="#"><span>Newsletter</span></a></li>
<li class="account"><a href="#"><span>My Account</span></a></li>
</ul>
</nav>
<input type="button" value="Back" onClick="history.back()" />
</body>
```

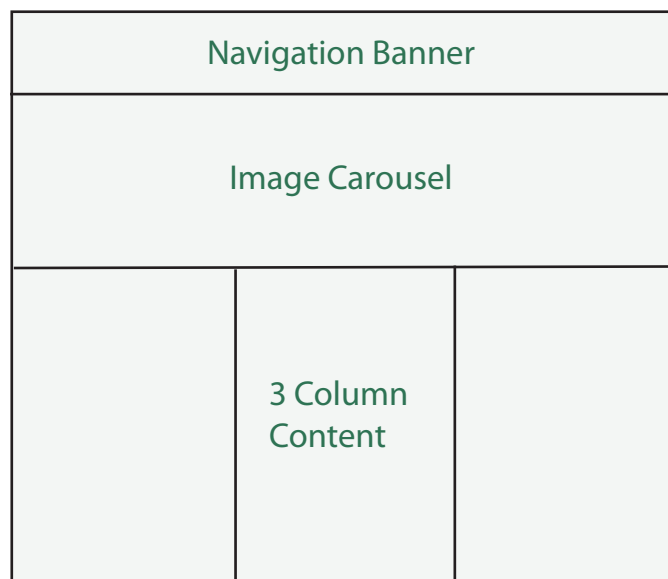
On the right, the 'Snippets' panel is open, showing a list of snippets. The 'CREATE A BACK BUTTON' snippet is selected. An arrow points from this snippet to the space below the 'NAVIGATION BAR' snippet in the code.

The Bootstrap Framework

Bootstrap is a popular CSS Framework for developing responsive and mobile compatible websites. It is a free collection of handy, reusable snippets of code written in HTML, CSS, and JavaScript, saving you the time of writing the code yourself.

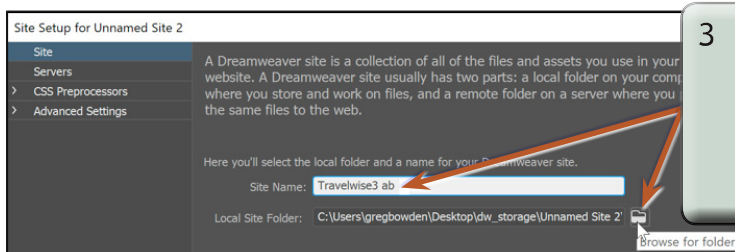
With a basic understanding of HTML and CSS code you can develop simple, attractive web sites. However, if you intend to develop more detailed web sites using Bootstrap, you do need to have a more comprehensive understanding of HTML and CSS.

In this case a new site will be created and Bootstrap snippets used to create a simple page layout with the following structure.



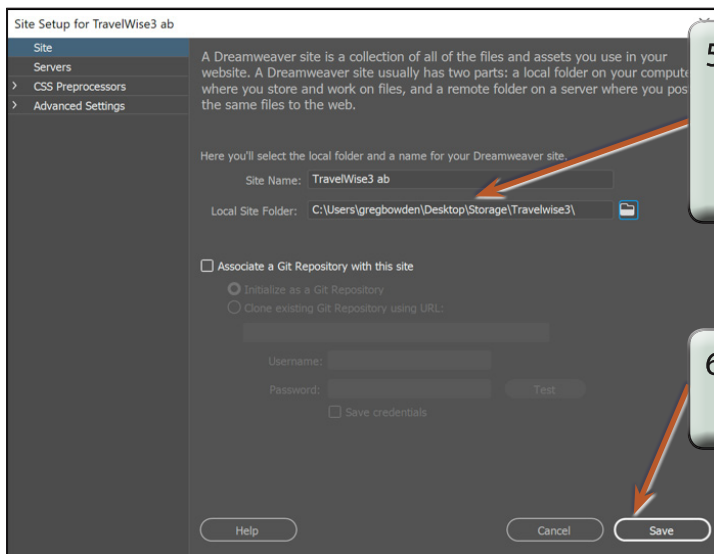
Starting a New Site

- 1 Load DreamWeaver or close the current documents.
- 2 Display the SITE menu and select NEW SITE.



- 3 In the SITE NAME box enter:
Travelwise3 <your initials>
then click on the BROWSE icon next to the LOCAL SITE FOLDER box.

- 4 Access your STORAGE folder and create a new folder called TRAVELWISE3.



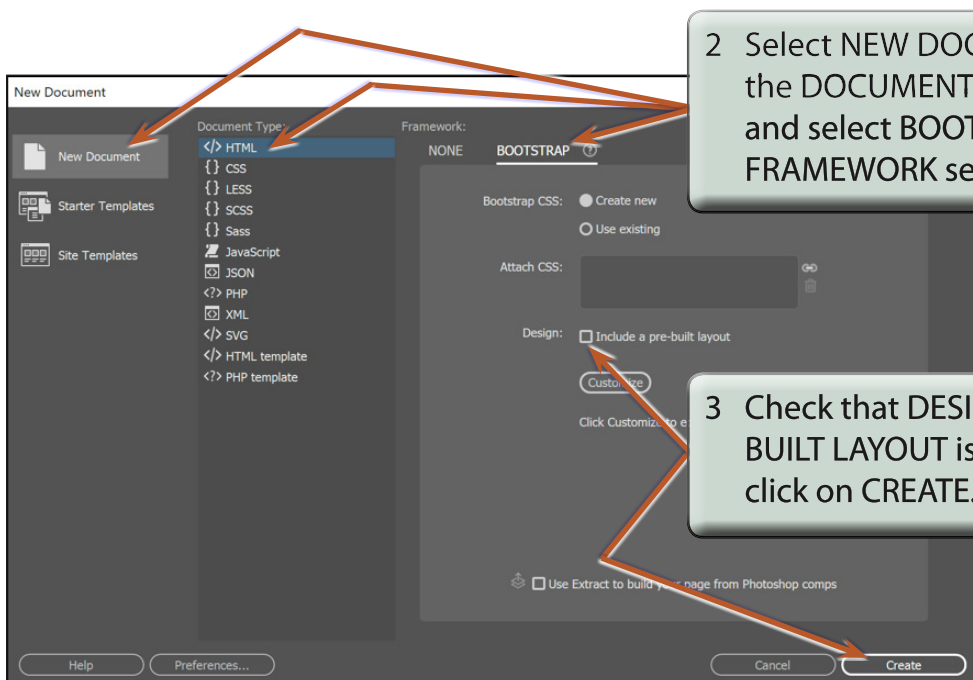
5 Select SELECT FOLDER or CHOOSE and the path to the folder should be added to the LOCAL SITE FOLDER box.

6 Click on the SAVE button to save the site details.

Starting a Bootstrap Framework Page

To use Bootstrap snippets a Bootstrap page needs to be started. The page installs the CSS and JavaScript files needed to use the Bootstrap code.

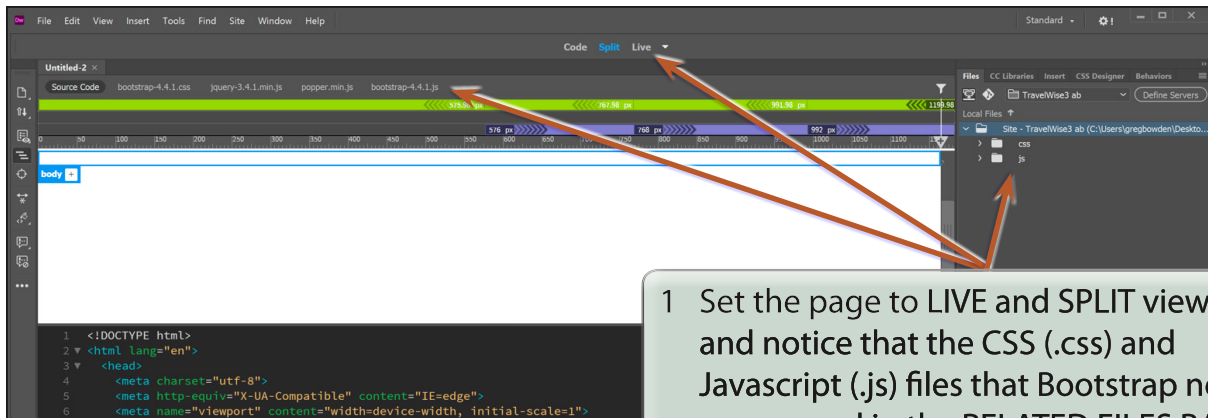
- 1 Select CREATE NEW from the START screen or select NEW from the FILE menu.



2 Select NEW DOCUMENT, set the DOCUMENT TYPE to HTML and select BOOTSTRAP in the FRAMEWORK section.

3 Check that DESIGN: INCLUDE A PRE-BUILT LAYOUT is not selected and click on CREATE.

Looking at the Files

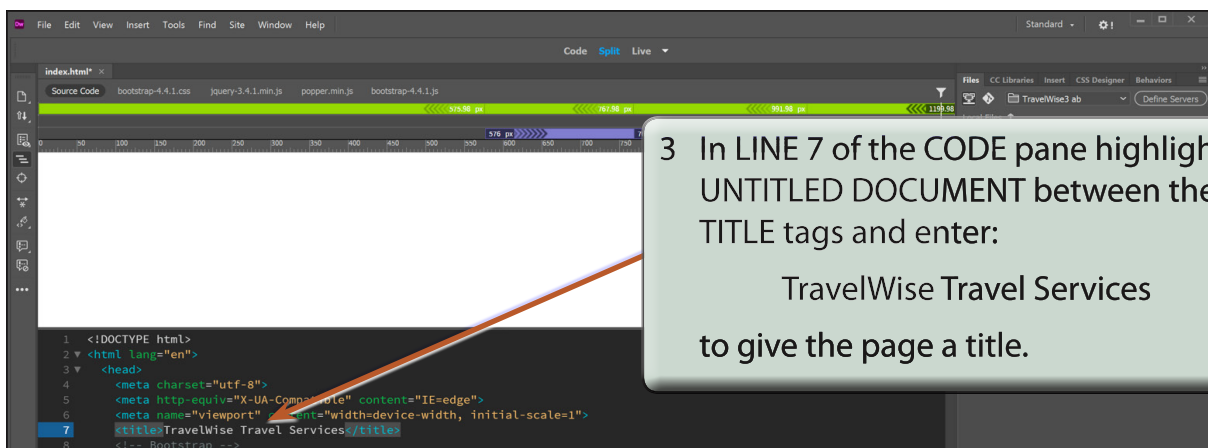


- 1 Set the page to LIVE and SPLIT views and notice that the CSS (.css) and Javascript (.js) files that Bootstrap needs are opened in the RELATED FILES BAR and added in folders to the FILES panel.

NOTE: It is best not to alter the .css or .js files as they store the necessary code for the Bootstrap snippet code that you add to function correctly.

- 2 Save the page in your TRAVELWISE3 folder as:

index.html



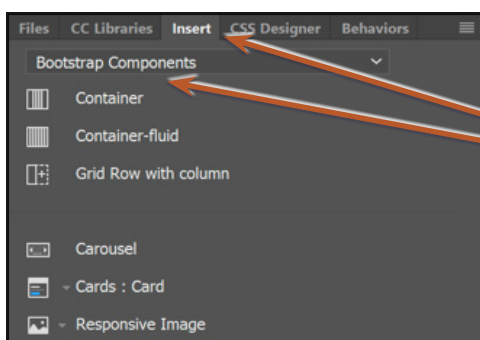
- 3 In LINE 7 of the CODE pane highlight UNTITLED DOCUMENT between the TITLE tags and enter:
TravelWise Travel Services
to give the page a title.

The Navigation Bar

A navigation bar can be inserted at the top of the page and a logo nested within it. This can save space on your page.

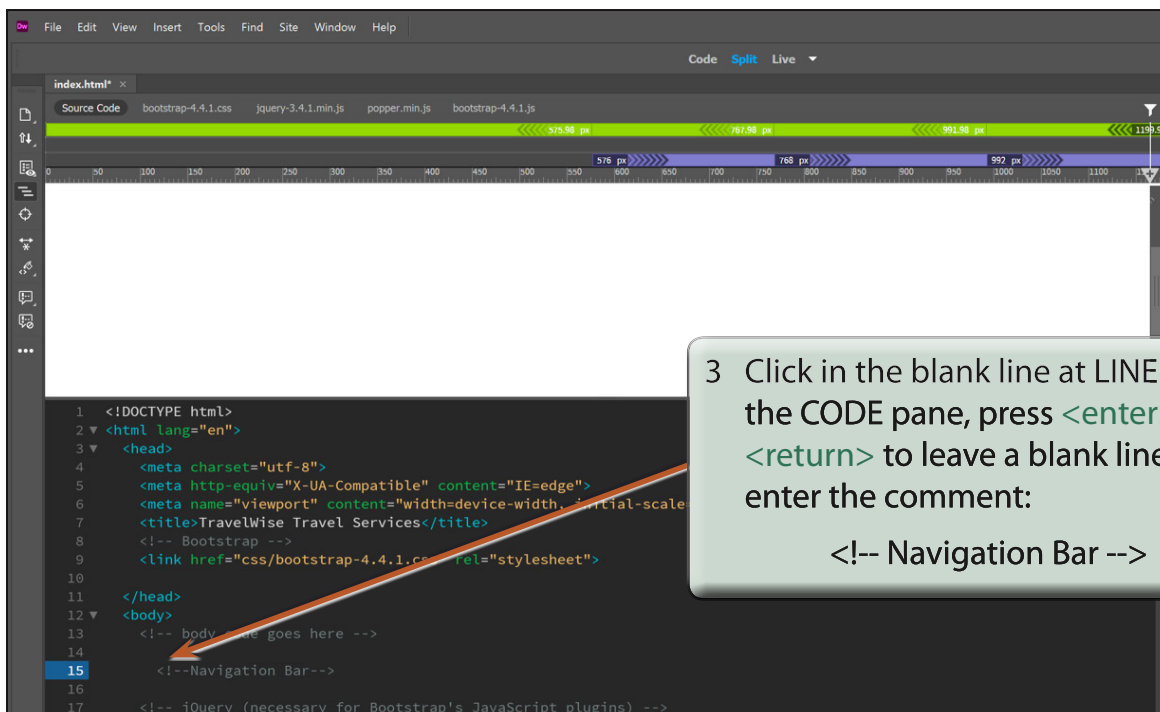
The Bootstrap snippets can be inserted from the SNIPPETS panel or the INSERT panel. The INSERT panel is probably easier to use, so that will be used here.

A Inserting the Navigation Bar Code



- 1 Expand the INSERT panel and set its top box to BOOTSTRAP COMPONENTS.

- 2 In the CODE pane it is good practice to add a comment at the position that each Bootstrap code snippet will be inserted. It makes easier to edit the code later.



- 3 Click in the blank line at LINE 14 in the CODE pane, press `<enter>` or `<return>` to leave a blank line, then enter the comment:
`<!-- Navigation Bar -->`

Useful Tools

There are some extra tools that are provided in DreamWeaver that you might like to make use of. The size of the DreamWeaver work page can be adjusted to help create the type of pages you want, CSS Transitions can be applied to CSS styles to make them animate and Tab Panels can be used to increase the content provided in pages. There are also sample template designs in the NEW DOCUMENT dialogue box that can be used.

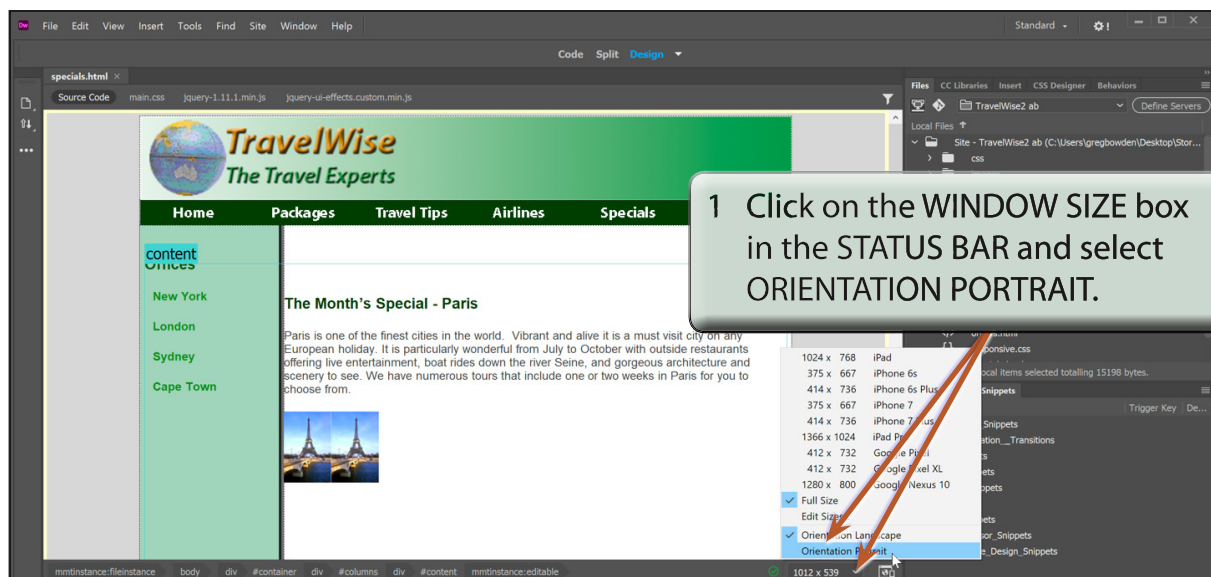
Screen Displays

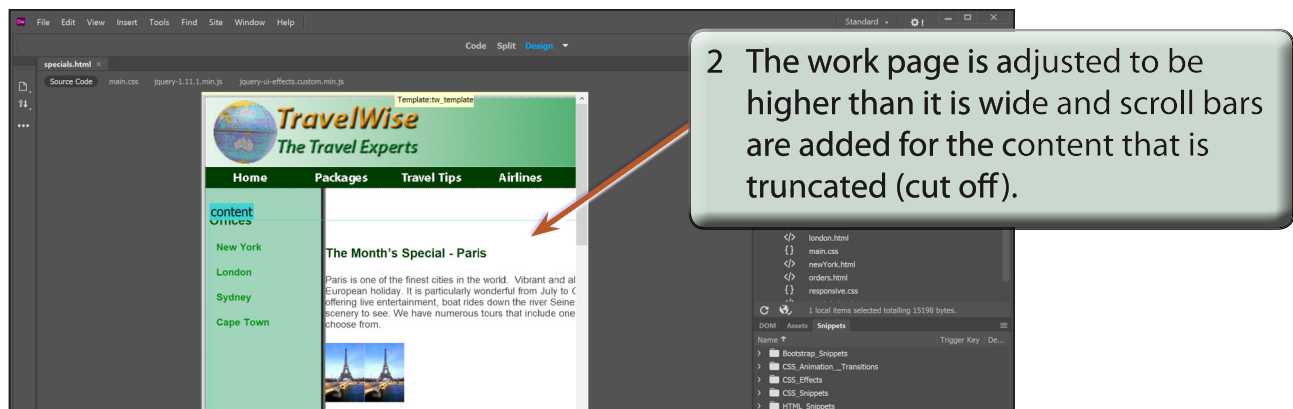
The WINDOW SIZE box in the STATUS BAR allows you to control the size of the work page.

- 1 Load DreamWeaver or close the current pages.
- 2 Open the FILES panel and set it to the TRAVELWISE2 site.
- 3 Open the SPECIALS.HTML page and set the screen to DESIGN VIEW.

A Portrait Orientation

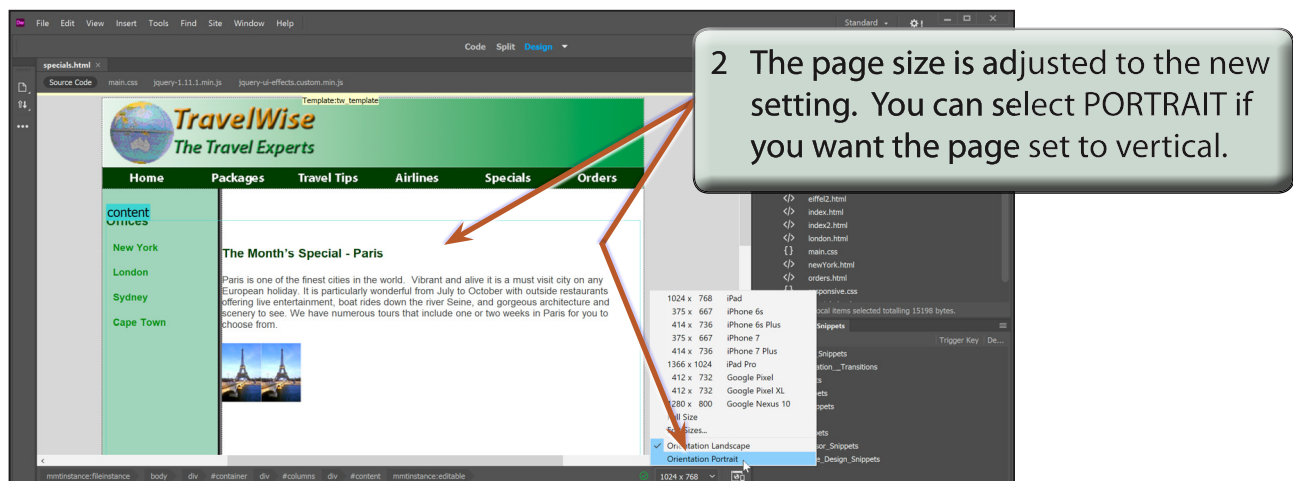
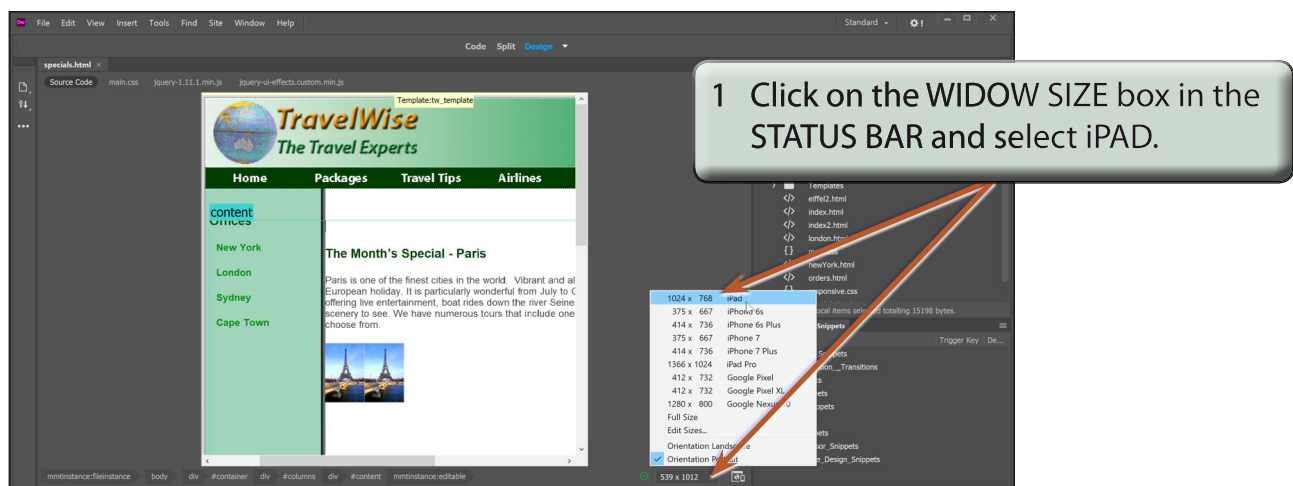
The default work page is set to landscape orientation because computer screens are wider than they are high. When creating pages specifically for mobile devices or tablets you might prefer to set the work page to portrait orientation to match the screens of those devices when they are used vertically.

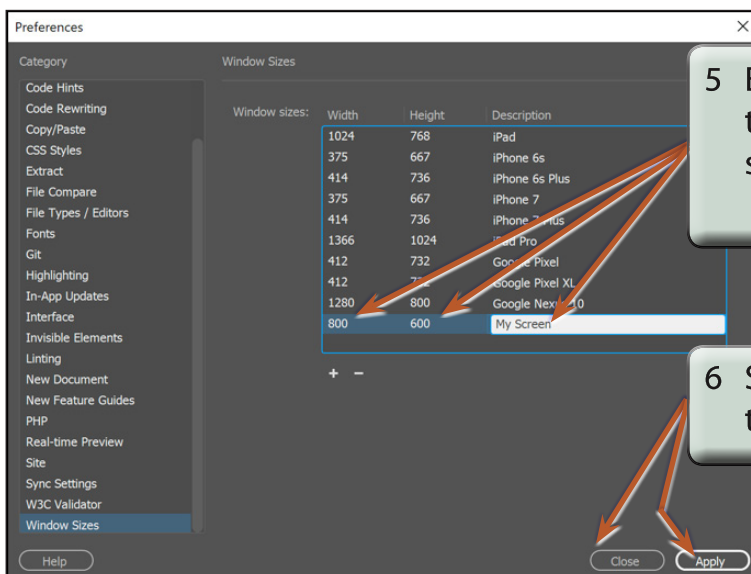
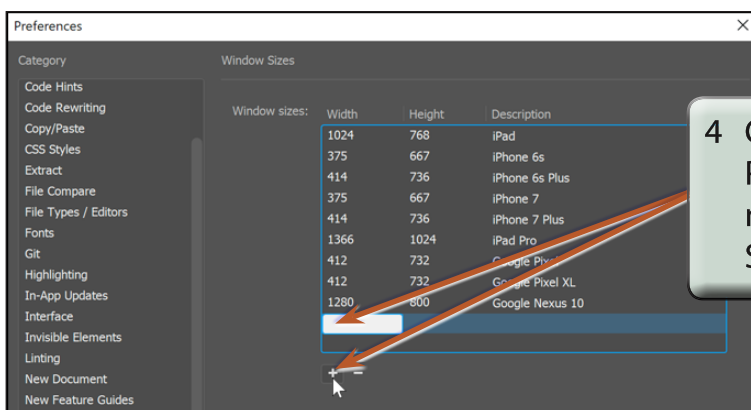
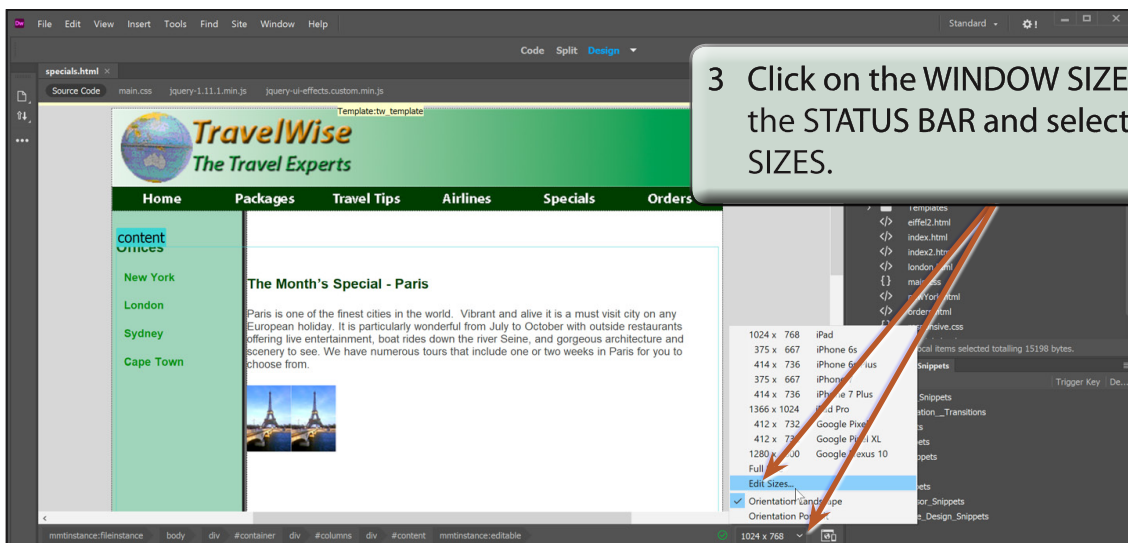


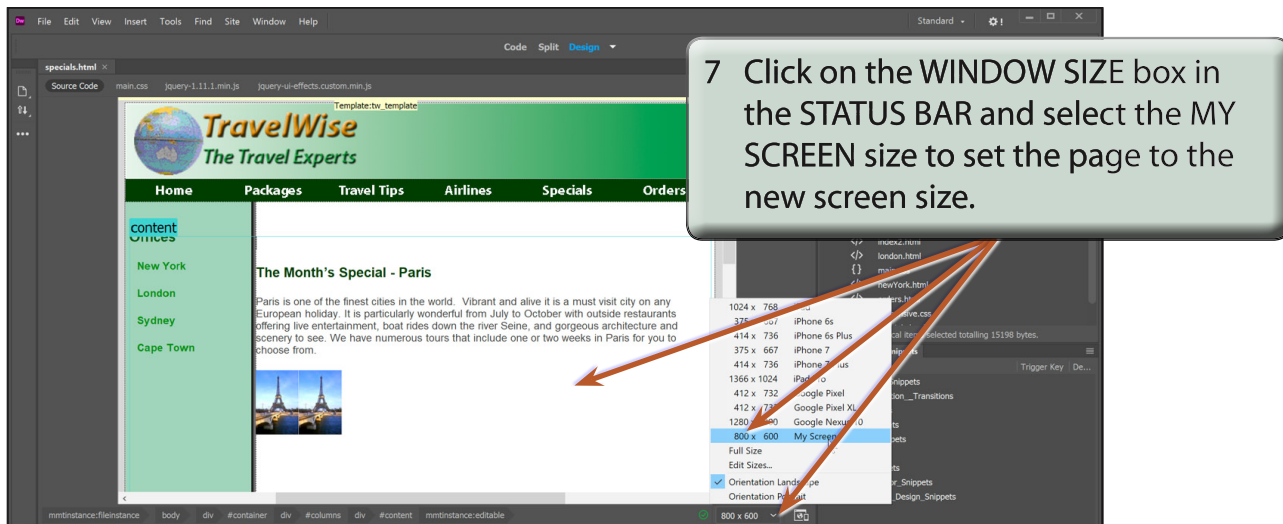


B Custom Page Displays

There are a series of pre-prepared page sizes that can be applied to your pages or you can create your own sizes.



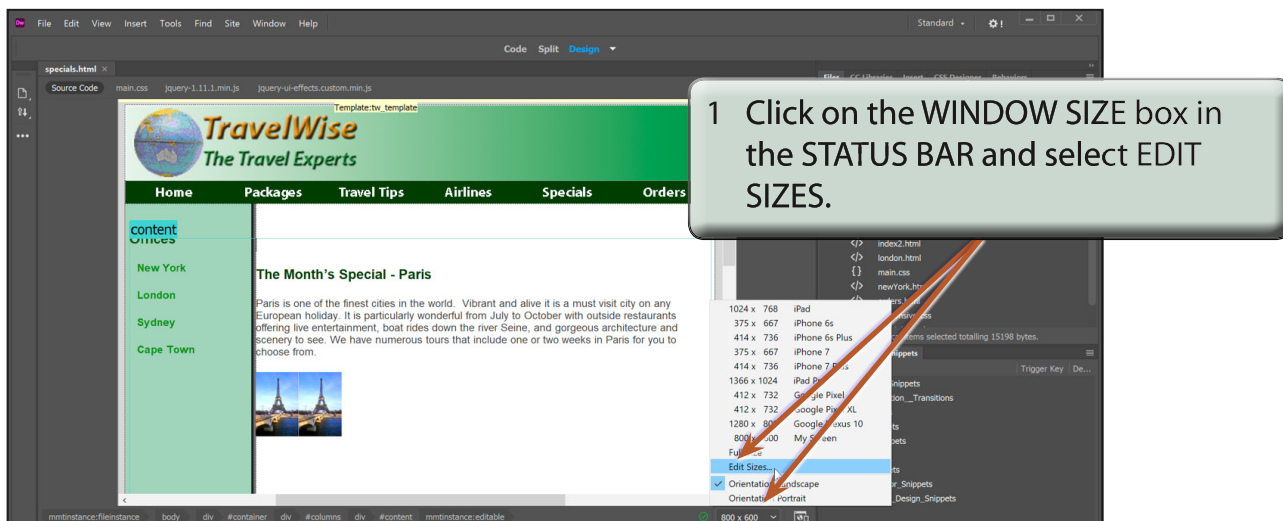




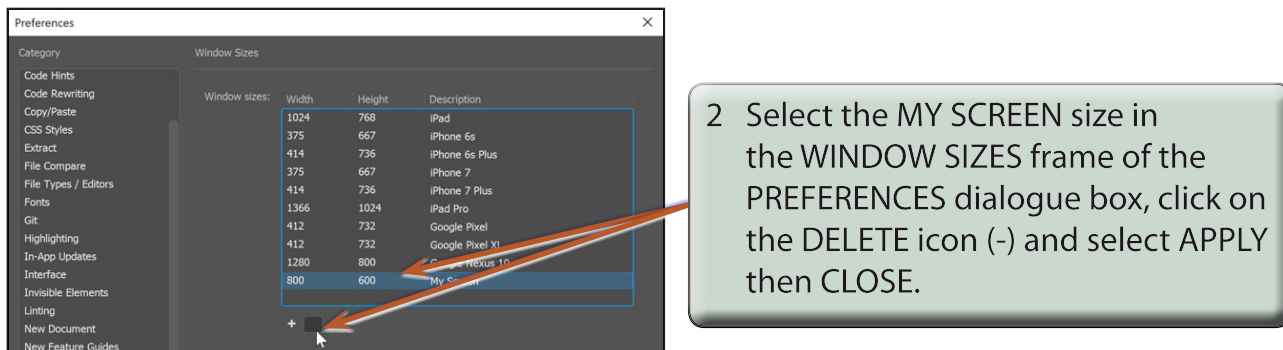
7 Click on the WINDOW SIZE box in the STATUS BAR and select the MY SCREEN size to set the page to the new screen size.

C Deleting Page Sizes

The page sizes in the WINDOW SIZE menu can be edited or deleted. Let's delete the custom page size you just created.



1 Click on the WINDOW SIZE box in the STATUS BAR and select EDIT SIZES.



2 Select the MY SCREEN size in the WINDOW SIZES frame of the PREFERENCES dialogue box, click on the DELETE icon (-) and select APPLY then CLOSE.

Width	Height	Description
1024	768	iPad
375	667	iPhone 6s
414	736	iPhone 6s Plus
375	667	iPhone 7
414	736	iPhone 7 Plus
1366	1024	iPad Pro
412	732	Google Pixel
412	732	Google Pixel XL
1280	800	Google Nexus 10
800	600	My Screen